



MOTO GUZZI

125 **I.S.D.** **TRIAL**
C.C. MODEL

SPARE PARTS CATALOG

1ST EDITION



MOTO GUZZI

FACTORY AND OFFICES: Mandello del Lario (Como)

Via Emanuele V. Parodi, 57
Telephones: Mandello Lario 71.112 (4 lines)
Telegrams: MOTOGUZZI - Mandello Lario

HEAD OFFICE:

Milan
Via Andegari, 4
Telephones: 890.632

SORTING OFFICE:

Milan
Via Gargano, 46
Telephones: 539.414.7 - 539.415.8

REGIONAL SALE OFFICES:

Milan
Via Domodossola, 17
Telephones: 311.105

Naples
Piazza Municipio, 84
Telephone: 310.581
Telegrams: MOTOGUZZI - Naples

125
C.C. **I.S.D. TRIAL**
MODEL

SPARE PARTS CATALOG

1ST EDITION

CONDITIONS OF SALE FOR SPARE PARTS

- Sales** : All supplies of spare parts are subject to the availability of the goods at the time the order is received.
- Prices** : All prices quoted in the official price list are net Fob prices to shipping point. Any tax or charge inherent to the buying and selling transaction shall be entirely on the buyers.
- Delivery and shipment** : Moto Guzzi shall not be held responsible for any delayed delivery. Any indicated term is only informative and not binding. All goods travel at the full risk of the buyers, including C.O.D. deliveries.
- Distributors** : Any order taken by the Distributor shall in no way bind Moto Guzzi who reserves itself the right to decide its execution or not.
- Claims** : Every claim for parts received in a damaged condition, not corresponding to the order, or short supplied shall be made within 8 days from the receipt of such parts. Claims received after such period shall not be considered.
- Liability** : Moto Guzzi will not be liable for any damages to persons or property arising from the use of its products, even if such damages be caused by structural or machining defect of the material supplied.

HOW TO ORDER

Each and every spare part order should contain the following information:

- Transport means required.
- Order No.
- Name of part.
- Quantity.

ALL ORIGINAL MOTO GUZZI PARTS ARE STAMPED WITH THE REGISTERED TRADE MARKS.

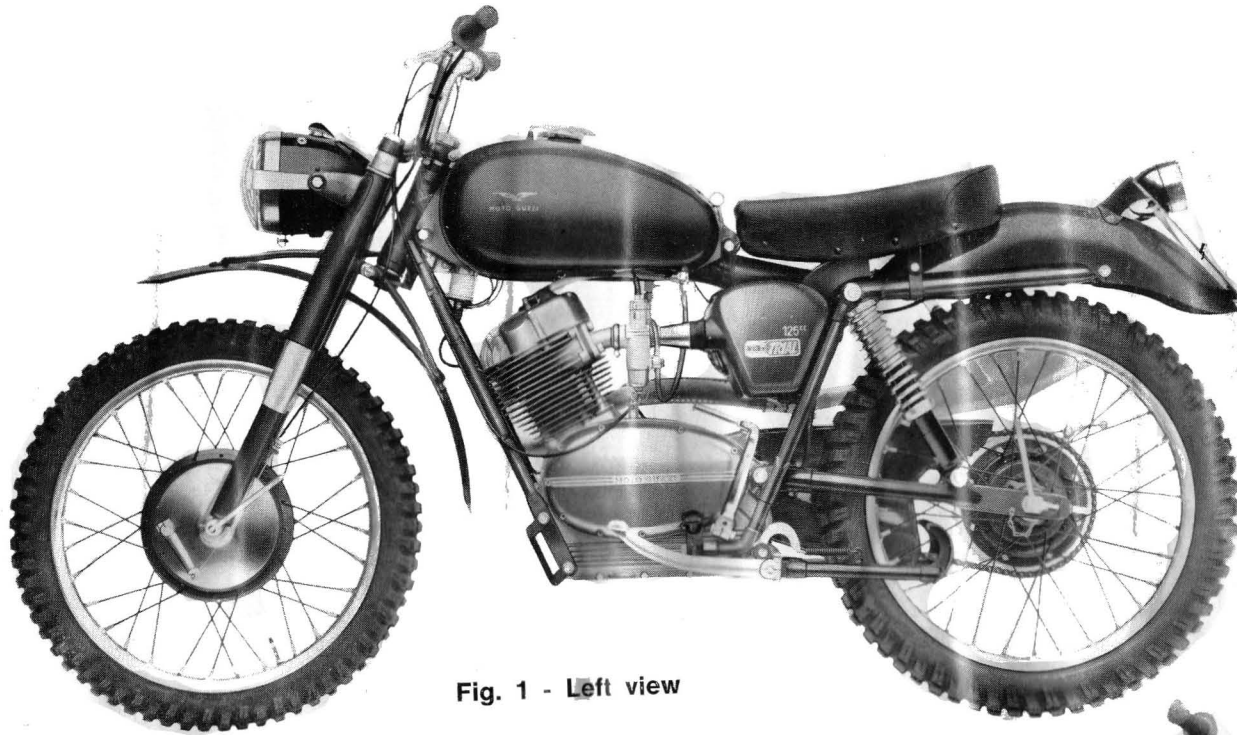


Fig. 1 - Left view

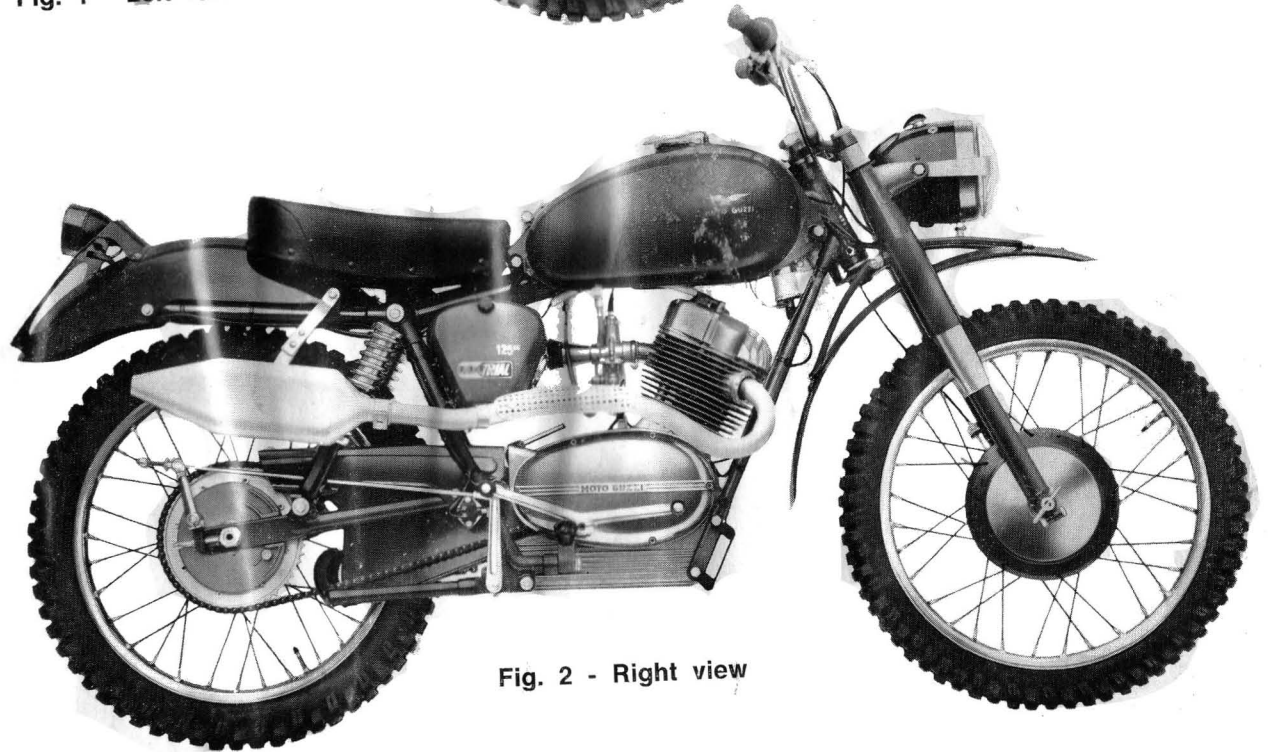
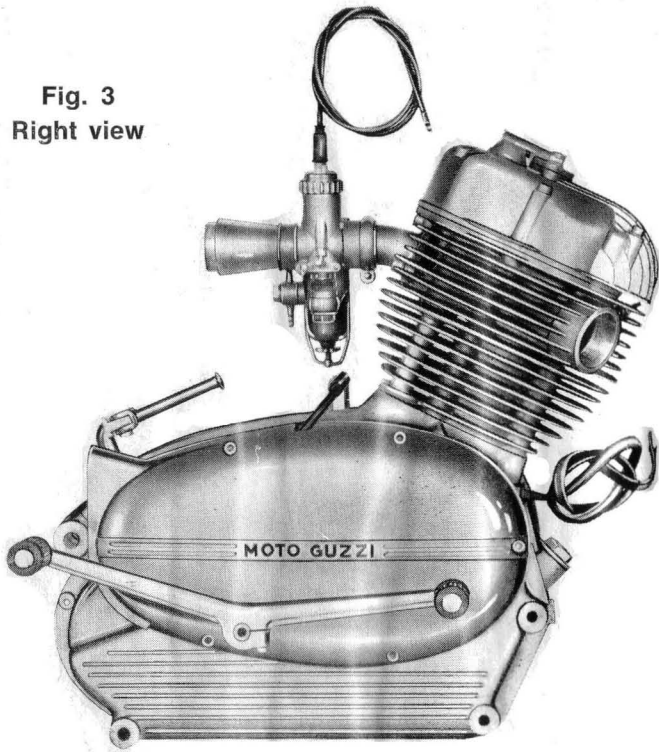


Fig. 2 - Right view

Fig. 3
Right view



ENGINE

Fig. 4
Left view

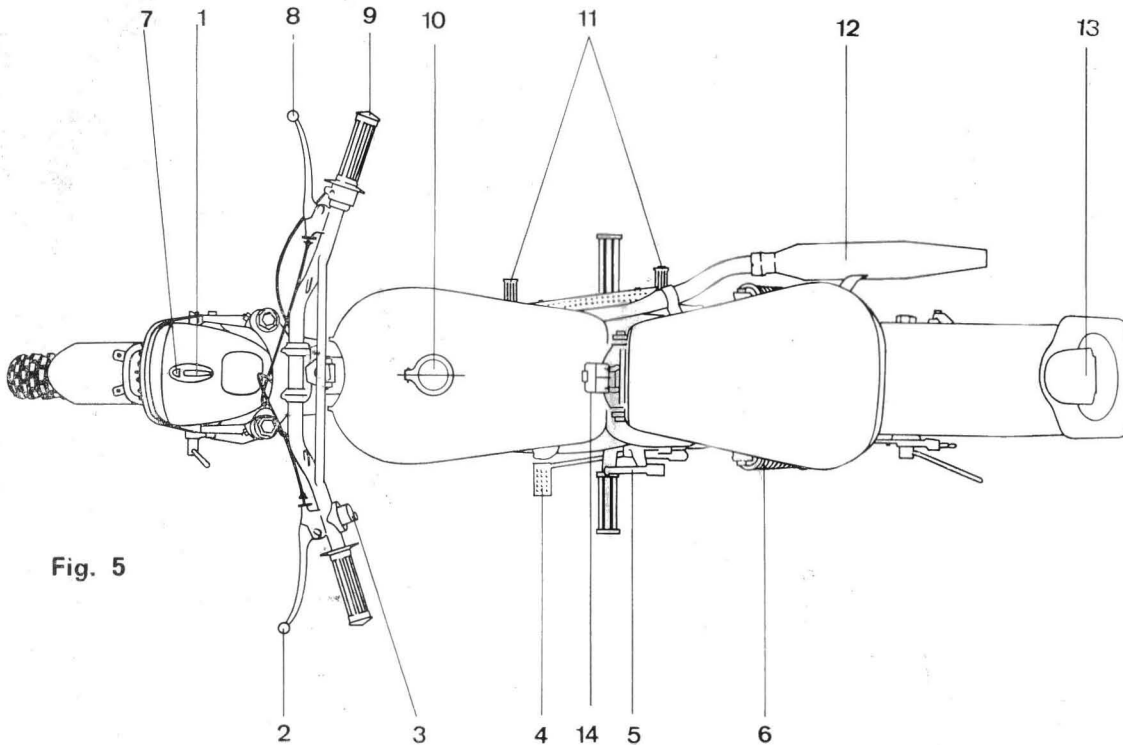
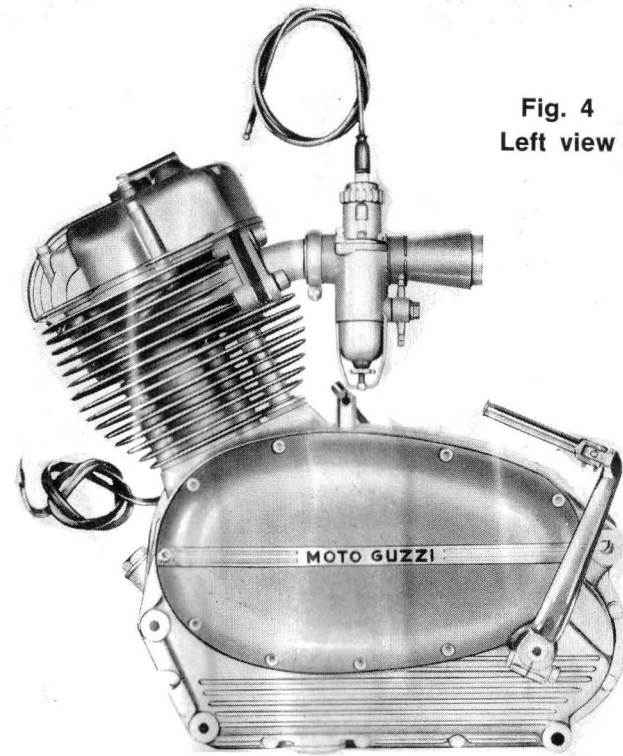


Fig. 5

CONTROL AND ACCESSORIES

(Fig. 5)

- 1 - Green warning light, town driving and parking light on.
- 1-bis - Ignition key.
- 2 - Clutch lever.
- 3 - Light switch and horn button.
- 4 - Rear brake pedal.
- 5 - Kickstarter.
- 6 - Rear suspension and hydraulic dampers.
- 7 - Red warning light, main light on.
- 8 - Front brake lever.
- 9 - Twist grip throttle control.
- 10 - Filler cap.
- 11 - Gearshift lever.
- 12 - Muffler.
- 13 - Tail and stop light.

GENERAL CHARACTERISTICS

ENGINE

Engine	Single cylinder, four stroke. Bore: 52 mm (2.043"). Stroke: 58 mm. (2.283"). Swept volume: 123.175 cc. (7.515 cu.in.). Compression ratio: 11.4 to 1. Output: 13.5 HP.
Cylinder	In light alloy, hard chromed barrel, 25° forward inclination.
Cylinder head	In light alloy with valve gear in oil bath.
Crankcase	Underside deeply finned for better oil cooling.
Valves	Overhead valves, push rod and rocker operated. Normal rocker-valve clearance on cold engine: — inlet .10 mm. (0.0039"). — exhaust .15 mm. (.0059"). (For racing, see page 46).
Fuel feed	By gravity from the tank. Carburetor setting and Make: Dell'Orto UB 22 BS2 - Choke 22 mm. (.866") - Atomizer n. 260 A - Main jet 98/100 - Pilot jet 35/100 - Slide n. 60 - Taper needle B 10, third notch from top.
Ignition	By flywheel alternator (6V - 28W) with external H. T. coil. Spark plug: n. 275 in Bosch-Marelli thermic scale or an equivalent.
Lubrication	Forced, with gear pump. Filters: screen type in crankcase, centrifugal on crankshaft.
Cooling	By air. Cylinder and cylinder head deeply finned.
Clutch	Multiplate metal discs in oil bath (5 driving and 5 driven).
Transmission	Primary drive by helical gears (engine-gearbox). Secondary drive by roller chain (gearbox-rear sprocket). Engine-gearbox ratio: 2.8 to 1 (25-70 T.) Gearbox-sprocket ratio: 3.66 to 1 (15-55 T.)

Overall gear ratios:

bottom gear	34.2 to 1
second gear	24 to 1
third gear	15.8 to 1
top gear	10.25 to 1

Gearbox

Constant mesh gears, 4 speeds foot operated.
Ratios:

bottom gear	3.33 to 1
second gear	2.34 to 1
third gear	1.54 to 1
top gear	1 to 1

CYCLE PARTS

Frame	Welded tubular structure.
Front suspension	Telescopic fork with hydraulic dampers.
Rear suspension	Swinging arm with coil springs on dampers.
Brakes	Expanding on both wheels.
Wheels	Spoked steel rims, 19 x 2 1/4.
Tires	Front: 2.50 x 19, rear 3.00 x 19. Tire Pressure: Front: 1.5 kg/sq. cm. (abt. 21 lbs. sq. in.). Rear: 1.6 kg/sq. cm. (abt. 23 lbs. sq. in.).
Overall dimensions	Wheelbase abt. 1250 mm. (49.21")
and weight	Length » 1900 mm. (78.80") Width » 760 mm. (29.92") Height (dry) » 1040 mm. (40.94") Ground clearance » 200 mm. (7.87") Dry weight » 95 kgs. (210 lbs.)
Performance	Speed about 105 kms/h (65 m.p.h.), geared for cross country riding.
Fuel replenishments	High grade petrol. Tank capacity about 10 lts. (2.64 US gall., 2.20 Imp. gall.) including 1.5 lt. reserve (.39 US gall., .33 Imp. gall.).
Lubricant	Oil required for crankcase sump: abt. 1.9 lts. (.501 US gall., 439 Imp. gall.).

INDEX TO PLATES

MODEL	MAIN GROUP	GROUP	PLATE No.
125 cc. TRIAL	ENGINE	Cylinder - Cylinder head - Rocker box - Rocker - Valves - Inlet pipe	1
		Crankcase - Covers - Oil pump	2
		Crankshaft - Connecting rod - Piston - Camshaft - Timing gears	3
	FRAME	Petrol tank - Exhaust pipe - Muffler	4
	ENGINE	Fuel lines - Carburetor	5
	TRANSMISSION	Clutch - Clutch operating levers - Kickstarter	6
	GEAR BOX	Gears - Shafts - Gear control	7
	FRAME	Frame - Rear fender - Seat - Tool box	8
	SUSPENSION	Steering - Suspension - Front fork - Swinging Fork - Front fender	9
	STEERING	Handlebar and levers (as fitted on 1st series)	10
		Handlebar and levers	10/1
	SUSPENSION	Swinging Fork - Rear suspension - Hydraulic dampers - Chain guard	11
	FRAME	Front wheel - Front hub and controls	12
	FRAME	Rear wheel - Hub - Rear brake and control	13
	ELECTRICAL SYSTEM	Flywheel - Outer coil - Spark plug	14
	LIGHTING EQUIPMENT	Lighting and accessories - Battery - Headlight - Tail light - Stop cutout - Horn - Cable harness	15
TOOLKIT	Standard tool kit	16	

NUMERICAL INDEX

Order No.	Plate No.	Figure No.	Order No.	Plate No.	Figure No.	Order No.	Plate No.	Figure No.	Order No.	Plate No.	Figure No.	Order No.	Plate No.	Figure No.
11 33 35 00	13	72	32 63 36 00	13	65	55 03 61 25	1	27	55 10 20 50	4	17	55 23 78 00	7	16
11 90 10 00	16	15	32 63 62 00	13	28	55 03 66 26	1	28	55 10 66 50	4	21	55 23 79 00	7	20
16 90 23 00	16	11	32 63 70 00	13	30	55 03 67 51	1	29	55 11 24 50	5	10	55 23 82 00	7	15
24 08 52 00	6	22	32 63 81 00	13	31	55 03 70 25	1	25	55 11 44 50	5	11	55 23 85 00	7	21
24 10 39 01	4	11	32 63 90 00	13	29	55 03 80 50	1	23	55 11 50 50	1	47	55 25 09 50	7	10
24 10 40 01			32 74 11 01	15	42	55 03 81 25	1	22	55 11 55 50	1	48	55 26 02 85	6	40
24 10 46 01			32 90 20 00	16	14	55 04 05 00	3	32	55 11 75 50	5	13	55 26 23 00	6	42
24 10 47 01			32 90 24 00	16	10	55 04 50 50	3	35	55 12 07 55	4	25	55 26 25 85	6	44
24 10 48 01			36 10 68 00	4	20	55 04 58 00	3	34	55 12 19 55	4	28	55 26 45 00	6	50
24 10 49 01			32 91 77 00	4	10/2	55 04 60 25	3	36	55 12 30 76	4	30	55 26 56 00	6	52
24 10 50 01			32 91 78 00	4	10/1	55 04 69 25	3	37	55 12 40 76	4	43	55 26 57 00	6	48
24 33 19 00	7	38	32 91 79 00	4	10/1	55 06 02 55	3	19/1	55 12 70 25	4	31	55 26 59 00	6	49
24 43 40 00	8	15	36 44 32 00	8	18	55 05 33 00	3	33	55 12 70 55	4	35	55 26 64 00	6	34
24 73 99 00	15	41/1	36 60 34 00	10	23	55 06 04 50	3	19	55 12 87 76	4	37	55 26 69 00	6	37
24 74 09 26	15	40		10/1	26	55 06 06 50	3	21/1	55 12 90 55	4	36	55 26 71 00	6	35
24 74 13 25	15	41	36 90 19 00	16	13	55 06 07 50	3	20	55 14 23 00	2	40	55 33 05 50	7	37
24 74 17 26	15	37	36 90 50 00	16	12	55 06 09 25	3	21	55 14 65 25	2	50	55 33 22 75	13	70
24 74 52 26	15	38	38 03 08 00	1	33	55 06 12 25	3	18	55 14 77 00	2	49	55 33 63 50	13	17
25 10 54 00	4	18	38 23 77 00	7	26	55 06 14 26	3	13/1	55 14 78 00	2	51	55 33 64 50	13	18
25 48 22 00	13	69	38 26 21 00	6	55	55 06 15 26	3	13	55 14 85 00	2	52	55 33 67 50	13	19
32 03 40 00	1	35	38 26 22 00	6	56	55 06 40 26	3	10	55 15 00 25	2	57	55 40 02 50	8	10
32 06 25 25	3	15	38 71 74 00	14	36	55 06 43 25	3	10/2	55 15 01 25	2	58	55 40 84 50	8	21
32 08 57 00	6	25	55 00 01 50	2	12	55 06 44 25	3	10/1	55 15 02 25	2	59	55 41 91 50	8	13
32 10 34 00	4	12	55 00 02 50	2	10	55 06 50 25	3	11	55 15 17 00	2	42	55 41 98 50	8	14
32 10 35 00	4	13	55 00 09 00	2	18	55 06 54 00	3	23	55 15 22 00	2	44	55 43 03 50	8	12
32 11 43 00	5	12	55 00 12 00	2	16	55 06 71 00	3	28	55 15 22 25	2	56	55 43 43 50	9	47
32 25 10 00	7	11	55 00 16 00	2	15	55 07 02 25	3	24	55 15 36 00	2	55	55 43 70 50	8	38
32 33 31 00	13	71	55 00 17 00	2	21	55 08 04 00	6	20	55 15 43 00	2	45	55 43 87 50	8	28
32 33 37 50	13	48	55 01 24 00	2	28	55 08 11 00	6	13	55 15 82 00	1	20	55 44 02 85	8	16
32 47 85 00	8	50	55 01 27 00	2	35	55 08 16 00	6	12	55 21 05 00	7	34	55 44 04 85	8	16/1
32 47 86 00	8	51	55 02 02 50	1	49	55 08 17 00	6	11	55 21 14 00	7	41	55 44 13 85	8	17
	13	20	55 02 08 00	1	50	55 08 22 00	6	16	55 21 14 50	7	47	55 44 14 50	8	17/1
32 51 49 00	9	37	55 02 18 25	1	52	55 08 23 00	6	15	55 21 27 50	7	39	55 46 05 50	8	32
32 51 52 00	9	41	55 02 22 25	1	21	55 08 26 00	6	17	55 21 30 50	7	40	55 46 08 50	8	34
32 51 55 00	9	36	55 02 30 25	1	14	55 08 29 00	6	19	55 21 36 50	7	44	55 46 23 50	8	33
32 51 56 00	12	34	55 02 33 00	1	18	55 08 38 00	6	39	55 21 40 50	7	45	55 47 30 50	11	16
32 55 16 00	11	20	55 02 35 25	1	10	55 08 55 00	6	24	55 21 47 00	7	42	55 47 50 00	8	44
32 61 45 00	13	25	55 02 37 25	1	11	55 09 01 50	6	26	55 21 48 50	7	48	55 47 60 50	8	48
32 61 47 00	12	32	55 02 48 00	1	42	55 09 09 50	2	13	55 23 05 00	7	32/1	55 47 62 00	8	49
32 62 21 00	12	22	55 02 61 25	1	31	55 09 13 00	6	27	55 23 24 00	7	33	55 49 02 50	9	10
	13	32	55 03 02 25	1	32	55 09 20 50	2	17	55 23 44 00	7	27	55 49 27 50	9	27
32 62 21 25	12	23	55 03 04 25	1	34	55 09 24 50	6	32	55 23 47 00	7	31	55 49 28 50	9	28
32 62 50 00	12	17	55 03 18 25	1	37	55 09 30 50	6	31	55 23 52 00	7	29	55 49 31 50	9	35
32 63 35 00	13	57	55 03 60 25	1	26	55 10 02 50	4	10	55 23 64 00	7	19	55 49 40 50	9	33
									55 23 68 00	7	14	55 49 61 50	9	25

NUMERICAL INDEX

Order No.	Plate No.	Figure No.	Order No.	Plate No.	Figure No.	Order No.	Plate No.	Figure No.	Order No.	Plate No.	Figure No.	Order No.	Plate No.	Figure No.
55 49 62 50	9	26	55 61 30 50	12	13	55 71 30 00	14	28/1	55 93 31 50	5	41	90 71 32 20	13	58
55 50 05 50	10	11	55 61 41 50	12	14	55 71 50 00	14	24	55 93 31 85	5	43	90 71 32 32	12	33
	10/1	12	55 61 52 50	12	30	55 71 51 00	14	23	55 93 32 50	5	40	90 71 32 40	12	26
55 50 06 50	10	12	55 62 02 50	12	15	55 71 56 00	14	22	55 93 34 50	5	39	90 71 32 61	13	64
	10/1	11	55 62 05 50	12	20	55 71 65 00	14	11	55 93 37 85	5	33	90 71 32 80	13	52
55 50 30 76	15	41	55 62 08 50	12	21	55 71 68 50	14	34	55 93 39 85	5	34	90 71 40 51	9	46
55 50 45 50	9	30	55 62 25 50	12	19	55 71 70 50	14	37	55 93 40 50	5	36	90 71 41 00	4	19
55 51 33 50	9	34	55 62 54 50	12	35	55 71 73 00	14	35	55 93 42 50	5	37	90 71 41 95	2	41
55 51 50 50	9	39	55 63 02 50	13	10	55 71 88 00	14	12	55 93 43 50	5	35	90 71 43 02	2	43
55 51 51 50	9	40	55 63 07 50	13	11	55 71 89 00	14	13	55 93 44 50	5	36	90 71 60 82	1	46
55 52 25 50	9	11	55 63 10 50	13	12	55 71 90 00	14	14	55 93 45 50	5	53	90 71 60 95	1	43
55 52 26 50	9	15	55 63 13 50	13	13	55 74 03 85	15	22	55 93 46 50	5	52	90 71 83 25	4	26
55 52 40 50	9	16	55 63 20 50	13	14	55 74 05 85	15	14	55 93 47 50	5	51	91 11 11 22	12	16
55 52 54 50	9	19	55 63 30 50	13	49	55 74 25 85	15	28	55 93 49 50	5	50	91 11 11 23	13	24
55 52 58 50	9	18	55 63 32 50	13	50	55 74 30 85	15	27	55 93 50 50	5	15	91 11 12 10	7	46
55 52 59 50	9	17	55 63 33 50	13	15	55 74 34 85	15	24	55 93 51 50	5	17	91 11 14 12	8	11
55 52 66 50	9	24	55 63 35 50	13	55	55 74 37 50	15	46	55 93 52 50	5	16	91 11 15 14	2	32
55 52 77 50	9	20	55 63 36 50	13	51	55 74 38 50	15	47	55 93 53 85	5	14	91 11 15 16	3	14
55 54 02 50	11	10	55 63 40 50	13	61	55 74 39 85	15	29	55 93 54 50	5	13/1	91 12 12 15	2	37
55 55 02 25	11	19	55 63 41 50	13	67	55 74 41 85	15	25	55 93 55 50	5	26	91 12 28 24	6	14
55 55 15 55	11	26	55 63 42 50	13	66	55 74 48 85	15	26	55 93 57 85	5	27	91 14 12 15	2	38
55 55 23 25	11	21	55 63 52 50	13	23	55 74 60 85	15	30	55 93 59 85	5	30	91 18 07 10	8	42
55 55 36 00	11	11	55 63 68 50	13	56	55 74 71 00			55 93 62 85	5	31	91 18 08 07	15	13/1
55 55 44 50	11	27	55 67 14 50	13	21	55 74 71 17			55 93 63 85	5	32	91 18 12 72	6	54
55 55 45 50	11	28	55 67 60 50	13	36	55 74 72 00	15	32	55 93 66 50	5	28	91 18 20 05	3	25
55 56 94 00	11	14	55 67 63 50	13	35	55 74 73 50			55 93 68 85	5	29	91 18 31 29	9	29
55 60 01 76	10/1	10	55 67 65 50	13	40	55 74 79 00			55 93 71 50	5	18	91 55 10 53	8	39
55 60 02 50	10	10	55 67 69 50	13	41				55 93 75 50	5	19	91 55 10 61	15	33
55 60 02 76	10/1	10/1	55 67 70 00	13	42	55 74 88 85	15	21	55 93 77 85	5	21	91 55 10 81	8	55
55 60 10 85	10/1	16	55 70 16 00	14	28	55 74 94 85	15	20	55 93 85 85	5	20	91 55 10 98	2	46
55 60 19 85	10/1	25	55 70 22 00	14	27	55 76 86 85	15	21/1	55 93 86 85	5	23	91 70 12 37	3	27
55 60 30 00	10/1	28	55 70 45 00	15	10	55 76 88 85	15	17	55 93 87 50	5	24	91 70 13 45	3	26
55 60 30 25	10	24	55 70 55 00	15	12	55 76 89 85	15	19	55 93 89 50	5	25	92 20 03 12	15	49
55 60 35 00	10/1	27	55 70 56 00	15	11	55 90 04 00	16	16	90 11 81 22	1	39	92 20 10 20	13	54
55 60 35 25	10	22	55 70 79 00	14	25	55 90 05 50	16	18	90 27 10 08	7	30			
55 60 54 85	10/1	14	55 70 86 00	14	26	55 91 12 00	16	17	90 27 10 20	7	43	92 2012 15		29
55 60 55 85	10/1	23	55 70 88 00	14	21	55 91 75 50	8	48/1	90 27 20 40	13	60			31
	10	15	55 70 89 00	14	19	55 93 20 50	5	44	90 27 20 42	12	28	92 20 12 17	13	62
55 60 56 00	10/1	15	55 70 90 00	14	18	55 93 21 50	5	45	90 35 10 17	3	17	92 20 12 24	2	36
	10	16	55 70 91 00	14	17	55 93 22 85	5	44/1	90 40 20 30	2	39	92 20 14 15	12	29
55 60 57 00	10/1	24	55 70 92 00	14	17/1	55 93 23 50	5	49	90 51 17 30	3	38	92 20 14 19	2	33
55 61 02 50	12	10	55 70 93 00	14	16	55 93 24 85	5	48	90 56 15 25	6	41	92 20 18 20	2	24
55 61 08 50	12	11	55 70 94 00	14	15	55 93 25 85	5	47	90 56 30 37	9	22	92 23 04 20	2	25
55 61 15 50	12	12	55 70 98 00	14	20	55 93 28 50	5	46	90 70 61 78	9	32			23
55 61 26 50	12	24	55 71 24 00	14	10	55 93 30 50	5	42	90 70 63 45	9	21	92 29 57 06		38

NUMERICAL INDEX

Order No.	Plate No.	Figure No.	Order No.	Plate No.	Figure No.	Order No.	Plate No.	Figure No.	Order No.	Plate No.	Figure No.	Order No.	Plate No.	Figure No.
92 29 67 51	3	16	93 76 00 72	10	21	95 10 08 21	12	27	98 05 43 16	4	40	98 38 60 05	7	22
92 60 00 03	15	48		10/1	21	95 10 08 37	9	31	98 10 60 11	8	47	98 38 60 10	2	14
92 60 22 06	2	34	94 32 10 44	6	36	95 10 08 57	13	63	98 10 60 15	1	19	98 38 60 36	7	24
	4	38	94 32 10 49	7	25	95 10 08 65	3	12		8	53	98 39 09 35	11	24
	7	23	94 32 10 58	6	43	95 10 08 80	13	53		1	40	98 39 10 48	8	19
	8	29	94 32 10 63	7	32	95 10 09 25	9	23	14	31	98 62 03 18	10/1	22	
	13	45	94 32 11 01	1	17	95 10 12 31	1	56	2	22	98 70 60 20	12	18	
14	29	94 32 11 35	6	18	8		24	8	52	2		11		
92 60 22 08	4	41	94 32 13 01	1	24		3	31	2	54	98 70 60 23	6	53	
	8	17/3	94 32 22 15	1	38	7	18	7	12	13		47		
	9	12	95 00 12 04	14	39	95 10 14 30	11	13	14	33	98 70 60 59	1	12	
92 60 22 10	8	27	95 02 11 06	1	41	95 12 00 65	8	30	98 10 60 28	2	53	98 70 80 34	1	44
	9	44		8	43		10	14		8	40	99 10 50 80	4	34
92 60 24 06	1	36	95 10 00 55	10	18	95 12 00 85	10/1	13/1	98 10 60 30	2	20	99 11 00 64	2	26
	10	19		15	44		8	37/1		2	19	2	19/1	99 11 00 62
92 70 00 50	15	43	95 10 01 17	1	16	95 18 10 25	15	16	98 10 60 43	2	20	Hand book	16	19
92 70 00 71	6	28	95 10 01 19	13	46		7	36	98 10 60 55	2	19			
92 70 00 73	6	45	95 10 01 22	2	27	95 19 02 50	12	25	98 10 60 62	2	19/1			
	13	43	95 10 01 30	1	13		8	15/1	98 10 70 13	11	17			
92 70 01 04	6	33	95 10 01 30	2	23	95 50 01 20	8	39	98 10 70 14	8	35			
92 70 01 22	7	17		7	13		13	39	98 10 70 21	8	36			
92 70 01 66	6	10	95 10 01 33	8	46	95 50 03 25	6	29	98 10 70 35	6	47			
92 70 02 03	13	16		14	32	6	29	13	44	8	17/2			
92 70 10 62	10	13	95 10 01 33	2	23/1	95 71 61 62	4	33	98 10 80 30	8	17/2			
	10/1	13		2	31	4	32	9	14	98 10 80 45	9			
92 70 10 86	2	47	95 10 01 39	2	31	95 71 63 65	13	33	98 10 81 87	8	22			
	1	55		8	41	13	34	11	22	98 10 90 55	11	22		
92 70 10 87	8	23	95 10 01 73	8	54	95 73 02 60	13	37	98 10 90 62	11	23			
	13	26		6	46	13	38	8	25	98 11 02 20	8	25		
92 70 11 06	1	53	95 10 02 22	8	37	95 74 01 60	6	30	98 11 22 31	11	15			
	3	30		11	18	10	20	15	48	98 20 03 12	15	48		
92 70 11 24	11	12	95 10 02 23	7	28	95 78 02 49	13	38	98 20 04 12	15	31			
92 75 00 83	4	16	95 10 02 59	1	45	95 78 02 71	10/1	20	98 26 04 15	2	60			
92 75 01 81	3	22		9	13	4	22	13	68	98 30 40 09	13	68		
9330 21 06	15	36	95 10 02 91	13	27	95 79 02 37	6	21	98 30 40 13	14	38			
93 30 21 10	15	35	95 10 03 11	11	25	95 92 00 81	4	23	98 30 50 09	9	45			
93 30 22 25	15	34		1	54	95 98 02 10	4	24	98 30 50 17	15	45			
93 44 28 70	15	32	95 10 03 15	8	26	95 98 54 18	4	14	98 30 60 32	1	15			
93 45 01 10	15	18		9	43	96 50 81 27	4	15	98 32 60 07	4	29			
93 45 02 12	15	39	95 10 05 12	8	20	96 50 81 38	4	15	98 32 60 17	10	17			
93 45 03 12	15	23		3	29	96 50 81 84	1	51		10/1	17			
93 70 12 41	7	35	95 10 06 24	6	51	98 02 43 10	4	44	98 34 60 10	8	45			
93 70 14 20	4	27	95 10 07 17	3	29	98 02 43 12	8	31	98 36 60 13	6	57			
			95 10 07 61	6	51	98 02 44 12	4	42	98 38 40 18	6	38			
				1	30	98 02 44 22	15	15						
				13	59	98 05 25 80	9	42						

ILLUSTRATED PLATES

PLATE 1 TRIAL MODEL
Engine

GROUP : Cylinder - Cylinder head - Rocker box -
Rocker - Valves - Inlet pipe

Fig. No.	Order No.	Description	Quantity	Notes
10	55 02 35 25	Cover, rocker box	1	
11	55 02 37 25	Gasket, rocker box	1	
12	98 70 60 59	Screw, rocker box cover	6	
13	95 10 01 30	Washer, rocker box	8	
14	55 02 30 25	Nozzle, breather tube	1	
15	98 30 60 32	Screw, breather tube diaphragm	1	
16	95 10 01 17	Diaphragm, breather tube	1	
17	94 32 11 01	Spring, breather tube diaphragm	1	
18	55 02 33 00	Washer, breather tube nozzle	1	
19	98 10 60 15	Bolt, breather tube nozzle	2	
20	55 15 82 00	Breather Tube, cylinder head to carburetor	1	
21	55 02 22 25	Cylinder head, c/w seats, guides, etc.	1	
22	55 03 81 25	Semicones, for valves	4	
23	55 03 80 50	Top collar, valve spring	2	
24	94 32 13 01	Spring, valve	2	
25	55 03 70 25	Collar, bottom, valve spring	2	
26	55 03 60 25	Valve inlet	1	
27	55 03 61 25	Valve, exhaust	1	
28	55 03 66 26	Guide, inlet	1	
29	55 03 67 51	Guide, exhaust	1	
30	95 10 07 17	Washer, spring valve	2	
31	55 02 61 25	Rocker Arm, inlet valve, c/w bushings	1	
32	55 03 02 25	Support, rocker arm	1	
33	38 03 08 00	Bush, inlet and exhaust rocker arm	4	
34	55 03 04 25	Rocker Arm, exhaust valve, c/w bushes	1	
35	32 03 40 00	Screw, adjusting, inlet and exhaust	2	
36	92 60 22 06	Nut, inlet and exhaust adjusting screw	2	
37	55 03 18 25	Shaft, rocker arm	2	
38	94 32 22 15	Spring, thrust, rocker arm	2	
39	90 11 81 22	Washer, adjusting	4	
40	98 10 60 17	Bolt, rocker shaft securing	2	
41	95 02 11 06	Washer, rocker shaft bolt	2	
42	55 02 48 00	Washer, cylinder head, right bolt	3	
43	90 71 60 95	Washer, cylinder head, left bolt	1	
44	98 70 80 34	Bolt, inlet tube securing	3	
45	95 10 02 23	Washer, inlet pipe bolt	3	
46	90 71 60 82	Washer, insulating, inlet pipe	3	
47	55 11 50 50	Inlet pipe	1	
48	55 11 55 50	Distance piece, inlet pipe-cylinder head	1	
49	55 02 02 50	Cylinder	1	
50	55 02 08 00	Gasket, base	1	
51	96 50 81 84	Bolt, crankcase to cylinder head	3	
52	55 02 18 25	Hollow bolt, crankcase to cylinder head	1	
53	92 70 11 06	Nut, hollow bolt	1	
54	95 10 03 11	Washer, hollow bolt nut	1	
55	92 70 10 87	Nut, cylinder bolt on crankcase	3	
56	95 10 12 31	Washer, cylinder bolt on crankcase	3	

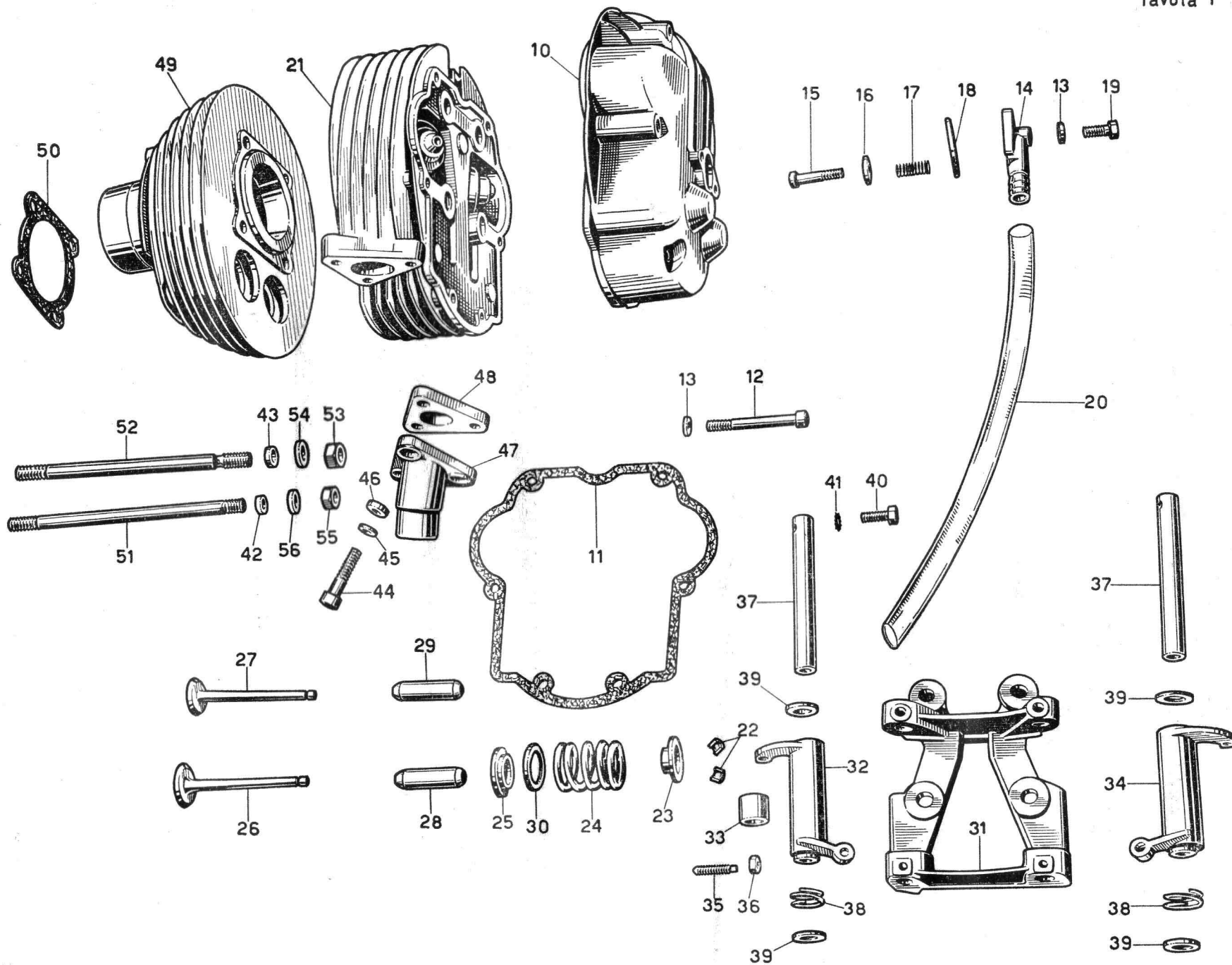


PLATE 2 TRIAL MODEL
Engine

GROUP : Crankcase - Covers - Oil pump

Fig. No.	Order No.	Description	Quantity	Notes
10	55 00 02 50	Cover, right side	1	
11	98 70 60 23	Screw, right and left cover	15	
12	55 00 01 50	Crankcase, c/w bushings and locating pins	1	
13	55 09 09 50	Cover, control spindle	1	
14	98 38 60 10	Screw, roller bearing clamp, L/H crankcase	2	
15	55 00 16 00	Cover, left side	1	
16	55 00 12 00	Gasket, left cover	1	
17	55 09 20 50	Support, clutch operating lever	1	
18	55 00 09 00	Gasket, centre crankcase	1	
19	98 10 60 55	Bolt, crankcase and oil tube to head	4	
19/1	98 10 60 62		1	
20	98 10 60 43	Bolt, bottom crankcase union and control spindle	4	
21	55 00 17 00	Gasket, control spindle cover	1	
22	98 10 60 21	Bolt, short, crankcase and spindle cover	5	
23	95 10 01 30	Washer, crankcase bolts, oil pump, and line	15	
23/1	95 10 01 33	Washer, long union screw and pump bolt	1	
24	92 20 18 20	Bearing, L/H crankcase, ball	1	{ 25 x 52 x 15 RIV 5 B 20 20 x 52 x 15 RIV 5 DBVP
25	92 23 04 20	Bearing, R/H crankcase, roller	1	
26	99 11 00 64	Screw, bearing clamp washer in L/H crankcase	3	
27	95 10 01 22	Washer, crankshaft, camshaft, and mainshaft bearings	9	
28	55 01 24 00	Flange, bearing retaining in L/H crankcase	1	
29	92 20 12 15	Bearing, camshaft in L/H crankcase	1	15 x 35 x 11 RIV 02 A
30	99 11 00 62	Screw, camshaft and mainshaft retaining	5	
31	95 10 01 39	Washer, tab washer securing nut and mainshaft bearing	3	
32	91 11 15 14	Bush, camshaft in L/H crankcase	1	
33	92 20 14 19	Bearing, mainshaft in L/H crankcase	1	{ 20 x 52 x 10 RIV 3 BE
34	92 60 22 06	Nut, tab washer screw and washer on mainshaft bearing	3	
35	55 01 27 00	Tab Washer, mainshaft bearing retaining	1	
36	92 20 12 24	Bearing, top gear, R/H crankcase	1	{ 25 x 52 x 9 RIV 4 AE
37	91 12 12 15	Bush, layshaft, L/H crankcase	1	
38	91 14 12 15	Cap, layshaft, R/H crankcase	1	
39	90 40 20 30	Ring, sealing, R/H crankcase	1	Angus 2030/5
40	55 14 23 00	Plug, oil filler, crankcase	1	
41	90 71 41 95	Gasket, oil plug	1	
42	55 15 17 00	Plug, oil filter	1	
43	90 71 43 02	Gasket, oil plug filter	1	
44	55 15 22 00	Oil filter in crankcase, complete	1	

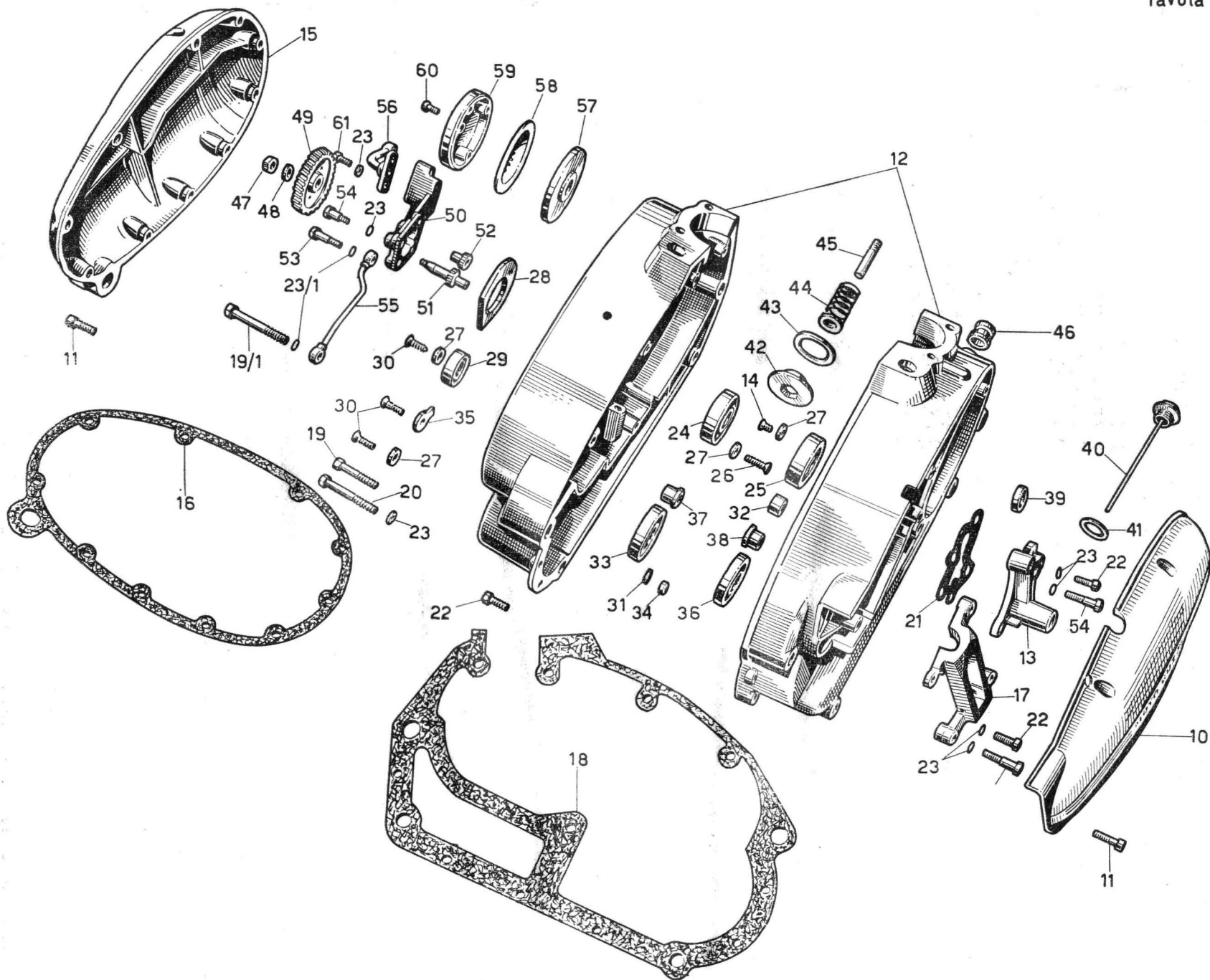


Fig. No.	Order No.	Description	Quantity	Notes
45	55 15 43 00	Tube, oil filter	1	
46	91 55 10 98	Bush, insulating, cables protection	1	
47	92 70 10 86	Nut, oil pump securing	1	
48	95 10 12 31	Washer, oil pump gear nut	1	
49	55 14 77 00	Gear, oil pump	1	
50	55 14 65 25	Body, oil pump	1	
51	55 14 78 00	Shaft, oil pump drive	1	
52	55 14 85 00	Gear, driven, oil pump	1	
53	98 10 60 30	Bolt, oil pump securing (long)	4	
54	98 10 60 22	Bolt, oil pump securing (medium)	3	
55	55 15 36 00	Tube, oil delivery to cylinder head	1	
56	55 15 22 25	Tube, oil delivery to centrifugal filter	1	
57	55 15 00 25	Cover, centrifugal oil filter	1	
58	55 15 01 25	Cover, centrifugal oil filter	1	
59	55 15 02 25	Body, centrifugal oil filter	1	
60	98 26 04 15	Screw, centrifugal filter body	4	
61	98 10 60 15	Bolt, centrifugal filter, line securing	2	

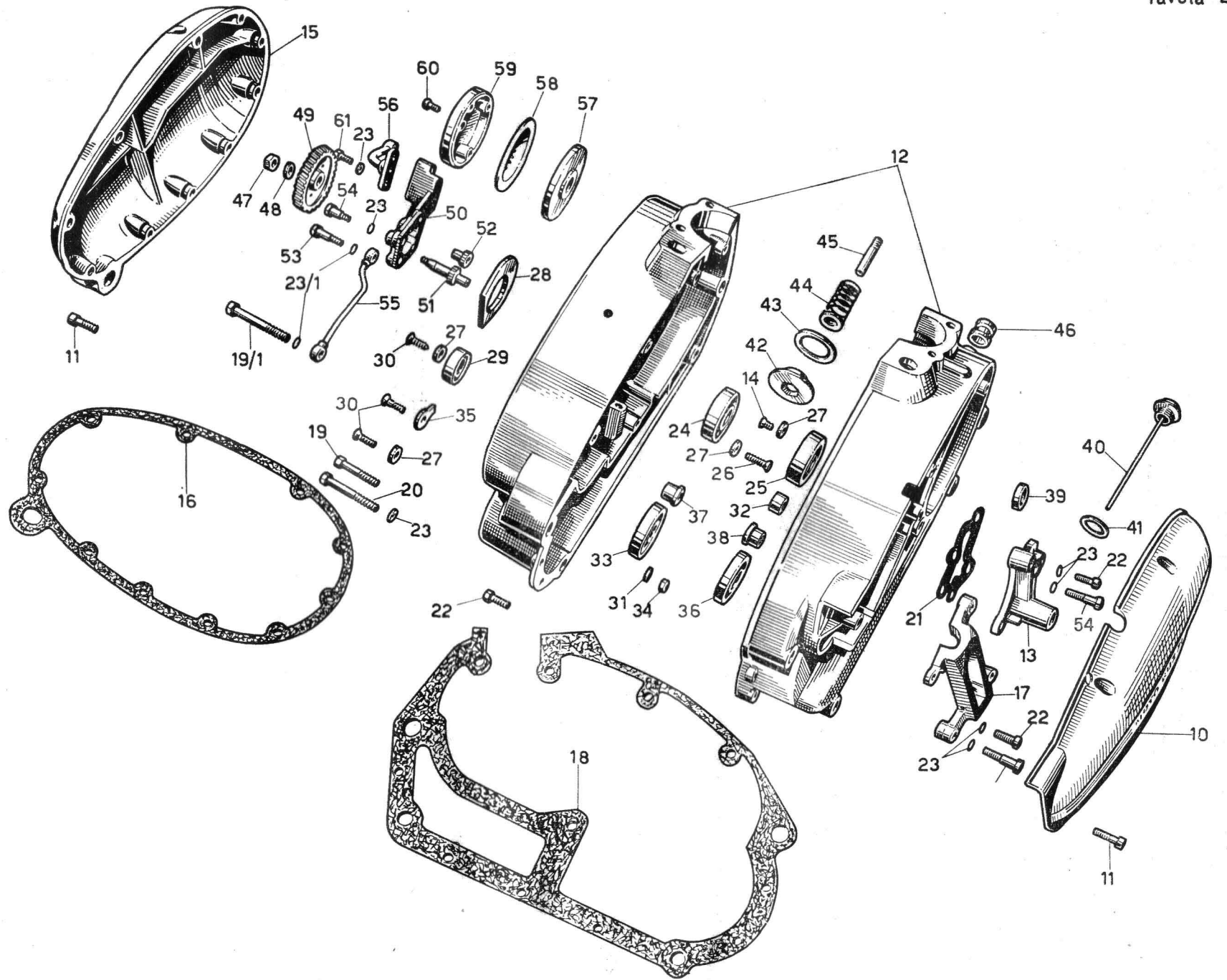


PLATE 3 TRIAL MODEL
Engine

GROUP : Crankshaft - Con-rod - Piston - Camshaft -
Timing gears

Fig. No.	Order No.	Description	Quantity	Notes
10	55 06 40 26	Crankshaft complete	1	
10/1	55 06 44 25	Crankshaft, half, timing side	1	
10/2	55 06 43 25	Crankshaft, half, flywheel side	1	
11	55 06 50 25	Crankpin	1	
12	95 10 08 65	Shims, on crankshaft	2	
13	55 06 15 26	Connecting rod c/w bushes	1	
13/1	55 06 14 26	Connecting rod c/w crankpin, cage, rollers, washers	1	
14	91 11 15 16	Bushing, piston pin	1	
15	32 06 25 25	Cage, roller	1	
16	92 29 67 51	Roller, con-rod cage	14	
17	90 35 10 17	Circlip, piston pin	2	
18	55 06 12 25	Piston pin	1	
19	55 06 04 50	Piston, standard	1	
19/1	55 06 02 55	Piston, c/w rings and pin	1	
20	55 06 07 50	Piston ring, standard	3	
21	55 06 09 25	Oil scraper ring, top, standard	1	
21/1	55 06 06 50	Piston rings, set complete	1	
22	92 75 01 81	Nut, mainshaft gear	1	
23	55 06 54 00	End plate, crankpin	2	
24	55 07 02 25	Gear, mainshaft	1	
25	91 18 20 05	Spacer, mainshaft bearing and gear	1	
26	91 70 13 45	Key, Woodruff, mainshaft gear and cam wheel	2	
27	91 70 12 37	Key, Woodruff, flywheel magneto	1	
28	55 06 71 00	Nut, flywheel securing	1	
29	95 10 05 12	Washer, flywheel retaining nut	1	
30	92 70 11 24	Nut, camshaft drive gear	1	
31	95 10 14 30	Washer, camshaft drive gear nut	1	
32	55 04 05 00	Gear, camshaft drive	1	
33	55 05 33 00	Camshaft	1	
34	55 04 58 00	Tappet	2	
35	55 04 50 50	Push rod, rocker control	2	
36	55 04 60 25	Tube, push rod cover	2	
37	55 04 69 25	Seal collar	4	
38	90 51 17 30	Seal, push rod cover tube	4	

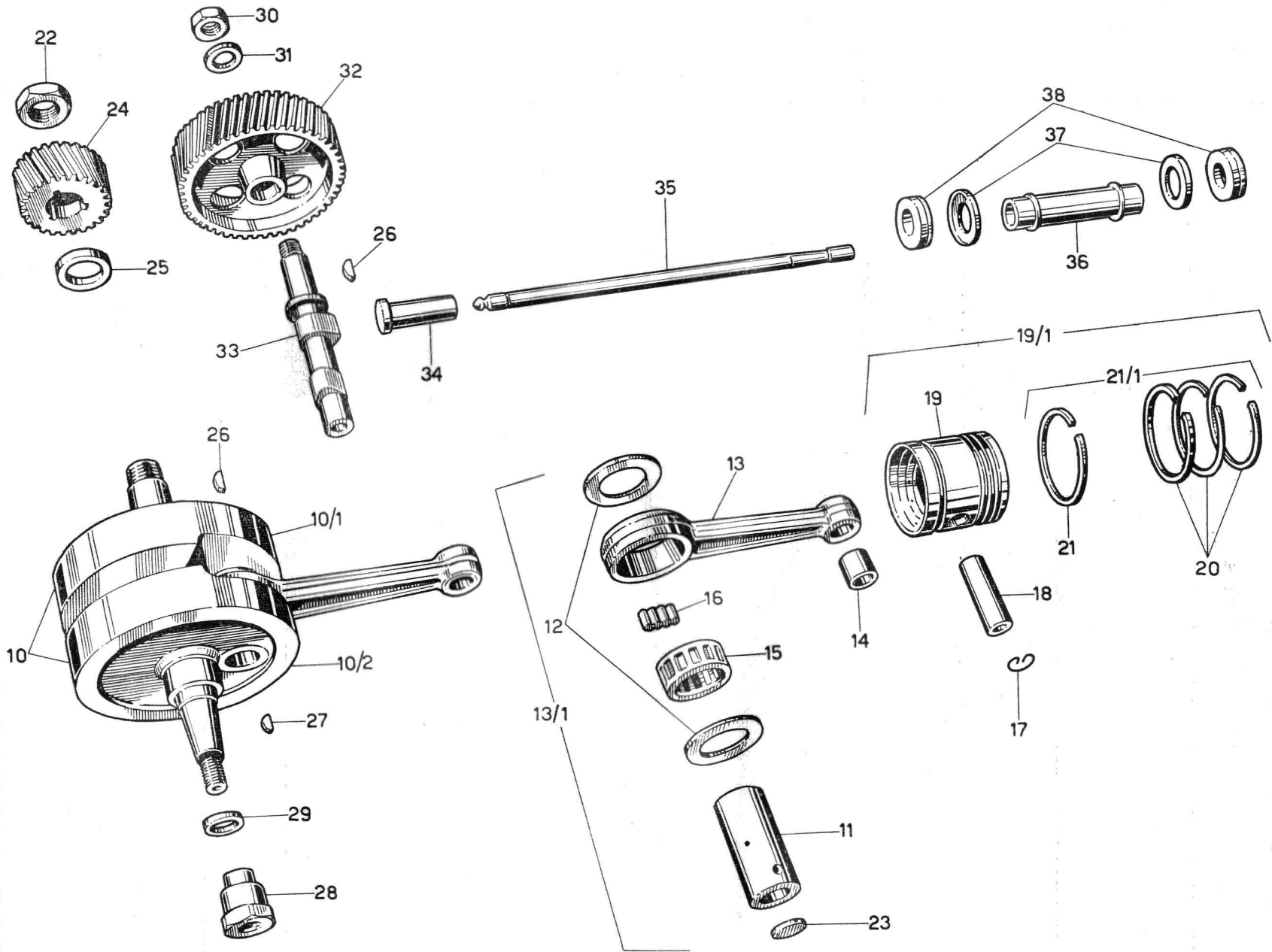


Fig. No.	Order No.	Description	Quantity	Notes
10	55 10 02 50	Petrol tank	1	
10/1	32 91 78 00	Decal white eagle, right and left	1	
10/2	32 91 79 00	Decal white eagle, right and left	1	
10/2	32 91 77 00	Decal ISDT, emblem	1	
11	24 10 39 01	Filler cap, c/w the following parts	1	
	24 10 46 01	Washer	1	
	24 10 48 01	Sealing cap	1	
	24 10 40 01	Cover	1	
	24 10 50 01	Lever	4	
	24 10 49 01	Screw	4	
	24 10 47 01	Spring	1	
12	32 10 34 00	Rubber mounting	1	
13	32 10 35 00	Bushing, rubber mounting	4	
14	96 50 81 27	Tie rod, front tank securing	1	
15	96 50 81 38	Tie rod, rear tank securing	2	
16	92 75 00 83	Nut, tank tie rods	4	
17	55 10 20 50	Fastener, tank securing, quick release	1	
18	25 10 54 00	Petrol cock	1	
19	90 71 41 00	Washer, petrol cock	2	
20	36 10 68 00	Adaptor, left petrol cock	1	
21	55 10 66 50	Adaptor, fuel line to right tap	1	
22	95 92 00 81	Nut, for adaptor	1	
23	95 98 54 18	Fuel line, short	1	
24	95 98 54 26	Fuel line, long	1	
25	55 12 07 55	Exhaust pipe	1	
26	90 71 83 25	Washer, exhaust pipe	2	
27	93 70 14 20	Lock washer	1	
28	55 12 19 55	Plate, exhaust pipe protection	1	
29	98 32 60 07	Screw, plate securing	1	
30	55 12 30 76	Muffler	1	
31	55 12 70 25	Clamp, muffler	1	
32	95 71 62 60	Roller, threaded, muffler clamp	1	
33	95 71 61 62	Pin, unthreaded, band securing	1	
34	99 10 50 80	Bolt, band securing	1	
35	55 12 70 55	Band, muffler to frame securing	1	
36	55 12 90 55	Lug, pipe to frame	1	
37	55 12 87 76	Stay, muffler to securing to right damper bolt	1	
38	92 60 22 06	Nut, lug securing bolt	1	
39	95 02 11 06	Washer, lug securing bolt	1	
40	98 05 43 16	Bolt, lug securing to frame	1	
41	92 60 22 08	Nut, lug securing bolt	1	
42	98 02 44 12	Bolt, stay securing to muffler	1	
43	55 12 40 76	Baffle Assembly, muffler	1	
44	98 02 43 10	Screw, baffle securing	1	

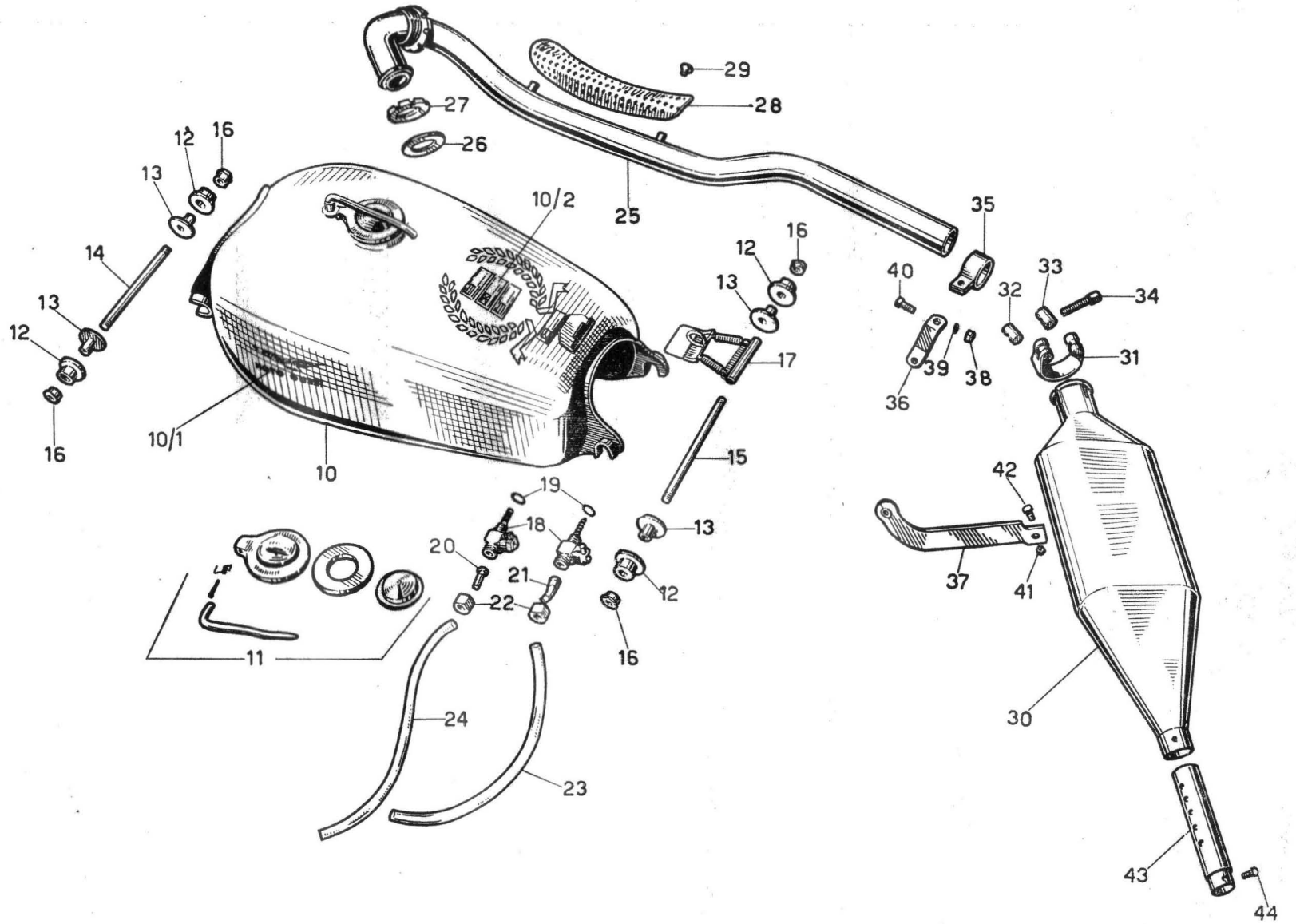


Fig. No.	Order No.	Description	Quantity	Notes
				Dell'Orto Order Number
10	55 11 24 50	Carburetor, c/w control cable	1	4126
11	55 11 44 50	Air intake tube	1	
12	32 11 43 00	Sleeve, air intake tube	1	
13	55 11 75 50	Cable, throttle	1	
13/1	55 93 54 50	Cap, rubber	1	1474.00.06
14	55 93 53 85	Lockring, mixture chamber cover	1	2324.00.60
15	55 93 50 50	Cover, mixture chamber	1	6194.00.53
16	55 93 52 50	Screw, adjusting, gas cable	1	1104.00.37
17	55 93 51 50	Nut, gas screw	1	1691.00.27
18	55 93 71 50	Spring, throttle slide	1	4878.00.61
19	55 93 75 50	Throttle slide	1	6196.60.64
20	55 93 85 85	Fastener	1	1407.00.21
21	55 93 77 85	Taper needle	1	2343.10.08
22		Body, carburetor		Not supplied as spare
23	55 93 86 85	Screw, securing band	1	1111.00.36
24	55 93 87 50	Band, sleeve locking	1	1723.00.50
25	55 93 89 50	Sleeve, insulating	1	6976.00.62
26	55 93 55 50	Choke, A type	1	3171.260.28
27	55 93 57 85	Main jet	1	1486.98.02
28	55 93 66 50	Screw, throttle adjusting	1	1095.00.37
29	55 93 68 85	Nut, throttle adjusting screw	1	1096.00.27
30	55 93 59 85	Pilot jet	1	1488.35.02
31	55 93 62 85	Screw, air adjusting	1	2115.00.37
32	55 93 63 85	Spring, air screw	1	1411.00.61
33	55 93 37 85	Plug, float chamber securing	1	2086.00.34
34	55 93 39 85	Washer, float chamber plug	2	1382.00.33
35	55 93 43 50	Clip, carburetor bowl	1	2192.00.24
36	55 93 44 50	Bowl, carburetor	1	2114.00.52
37	55 93 42 50	Spring, filter	1	5445.00.61
38	55 93 40 50	Filter	1	2135.00.29
39	55 93 34 50	Washer, bowl	1	2120.00.30
40	55 93 32 50	Needle	1	3344.00.05
41	55 93 31 50	Needle seat	1	2116.00.33
42	55 93 30 50	Float	1	2189.00.80
43	55 93 31 85	Circlip, needle return	1	1452.00.21
44	55 93 20 50	Body, float chamber	1	3626.00.96
44/1	55 93 22 85	Washer, float chamber cover	1	1414.00.30
45	55 93 21 50	Float cover	1	4100.00.54
46	55 93 28 50	Screw, float cover securing	2	5774.00.36
47	55 93 25 85	Circlip, tickler locking	1	1493.00.21
48	55 93 24 85	Spring, tickler return	1	1410.00.61
49	55 93 23 50	Tickler	1	2396.00.25
50	55 93 49 50	Plug, banjo union	1	2727.00.34
51	55 93 47 50	Washer, banjo union plug	1	2140.00.30
52	55 93 46 50	Banjo union	1	3733.00.38
53	55 93 45 50	Gasket, banjo union	1	2139.00.30

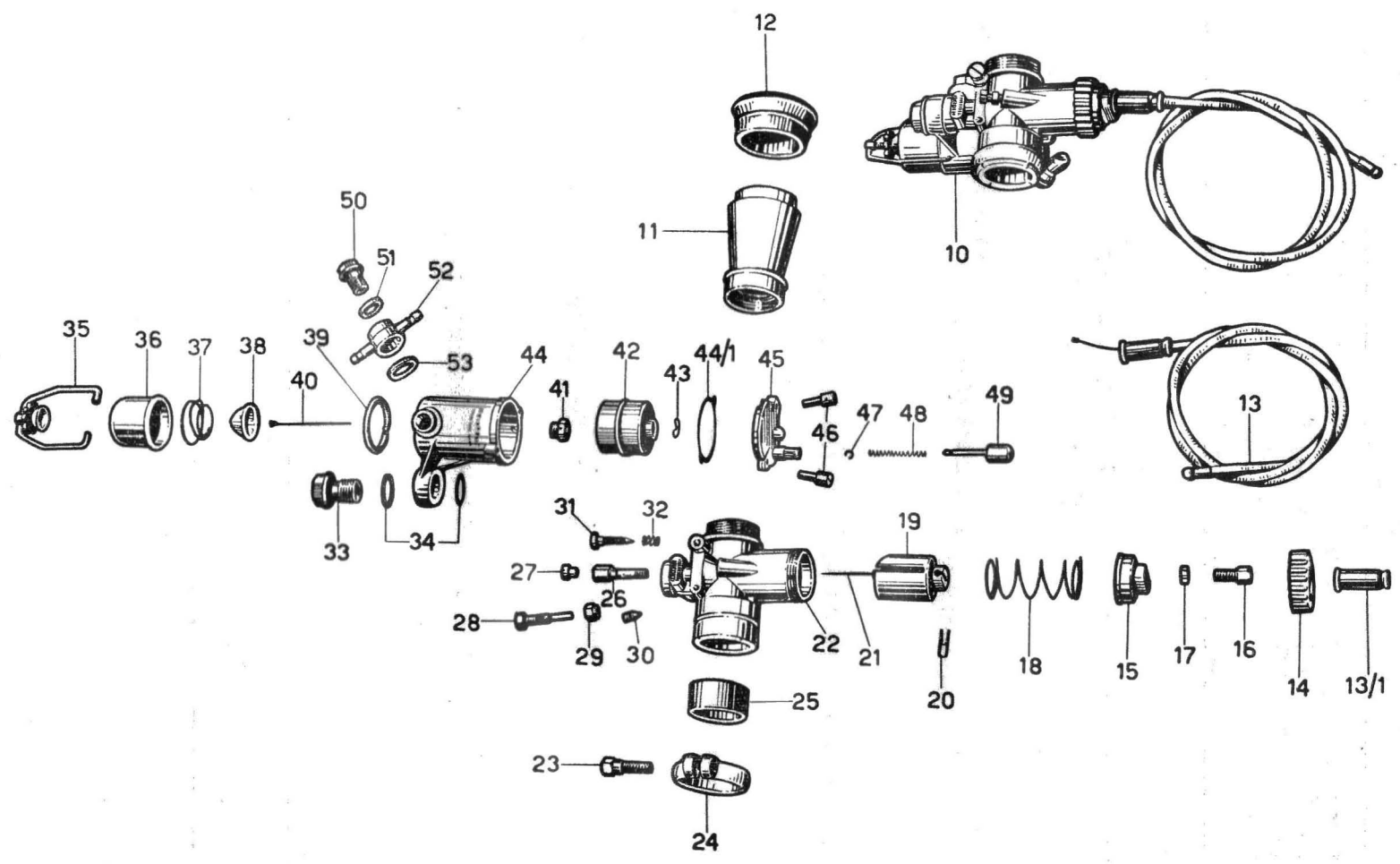


PLATE 6 TRIAL MODEL
Transmission

GROUP : Clutch - Clutch operating lever - Kickstarter

Fig. No.	Order No.	Description	Quantity	Notes
10	92 70 01 66	Nut, clutch body retaining	1	
11	55 08 17 00	Washer, clutch body nut	1	
12	55 08 16 00	Body, clutch	1	
13	55 08 11 00	Drivegear, c/w bush	1	
14	91 12 28 24	Bush, drive gear	1	
15	55 08 23 00	Disk bronze	5	
16	55 08 22 00	Disk, steel, outer notches	5	
17	55 08 26 00	Pressure plate, clutch	1	
18	94 32 11 35	Clutch spring	6	
19	55 08 29 00	Spring plate	1	
20	55 08 04 00	Ring, clutch pressure plate retainer	1	
21	95 98 02 10	Plug, oil retaining on pressure plate	1	
22	24 08 52 00	Rod, disk pressure plate, mushroom	1	
23	92 29 57 06	Ball, clutch rod to mushroom and k/s pin	2	
24	55 08 55 00	Clutch rod	1	
25	32 08 57 00	Clutch rod, ball end	1	
26	55 09 01 50	Lever, clutch operating	1	
27	55 09 13 00	Screw, clutch operating lever, adjusting	1	
28	92 70 00 71	Nut, adjusting screw and k/s pin	2	
29	95 50 03 25	Cotter pin, clutch lever pin	4	
30	95 78 02 71	Pin, clutch lever	1	
31	55 09 30 50	Cable, clutch	1	
32	55 09 24 50	Stud, cable adjuster	1	
33	92 70 01 04	Nut, cable adjusting stud	1	
34	55 26 64 00	Gear, kickstarter	1	
35	55 26 71 00	Pawl, k/s anchor	2	
36	94 32 10 44	Spring, k/s anchor pawl	2	
37	55 26 69 00	Plate, kickstarter gear, holding	1	
38	98 38 40 18	Screw, k/s gear holding plate	4	
39	55 08 38 00	Washer, bearing to clutch body	1	
40	55 26 02 85	Lever, Kickstarter, c/w rubber	1	
41	90 56 15 25	Seal, starter pin	1	
42	55 26 23 00	Screw, k/s pedal	1	
43	94 32 10 58	Spring, k/s pedal	1	
44	55 26 25 85	Pin, k/s lever	1	
45	92 70 00 73	Nut, k/s securing bolt	1	
46	95 10 01 73	Washer, k/s securing bolt	1	
47	98 10 70 35	Bolt, k/s securing spindle	1	
48	55 26 57 00	Spring, k/s return	1	
49	55 26 59 00	Bolt, k/s spring retaining	1	
50	55 26 45 00	Spindle, kickstarter	1	
51	95 10 06 24	Washer, k/s	1	
52	55 26 56 00	Ratchet gear	1	
53	98 70 60 23	Screw, ratchet gear securing	1	
54	91 18 12 72	Pivot, rotating	1	
55	38 26 21 00	Pedal, rubber	1	
56	38 26 22 00	Washer, rubber pedal retaining	1	
57	98 36 60 13	Screw, pedal rubber fixing	1	

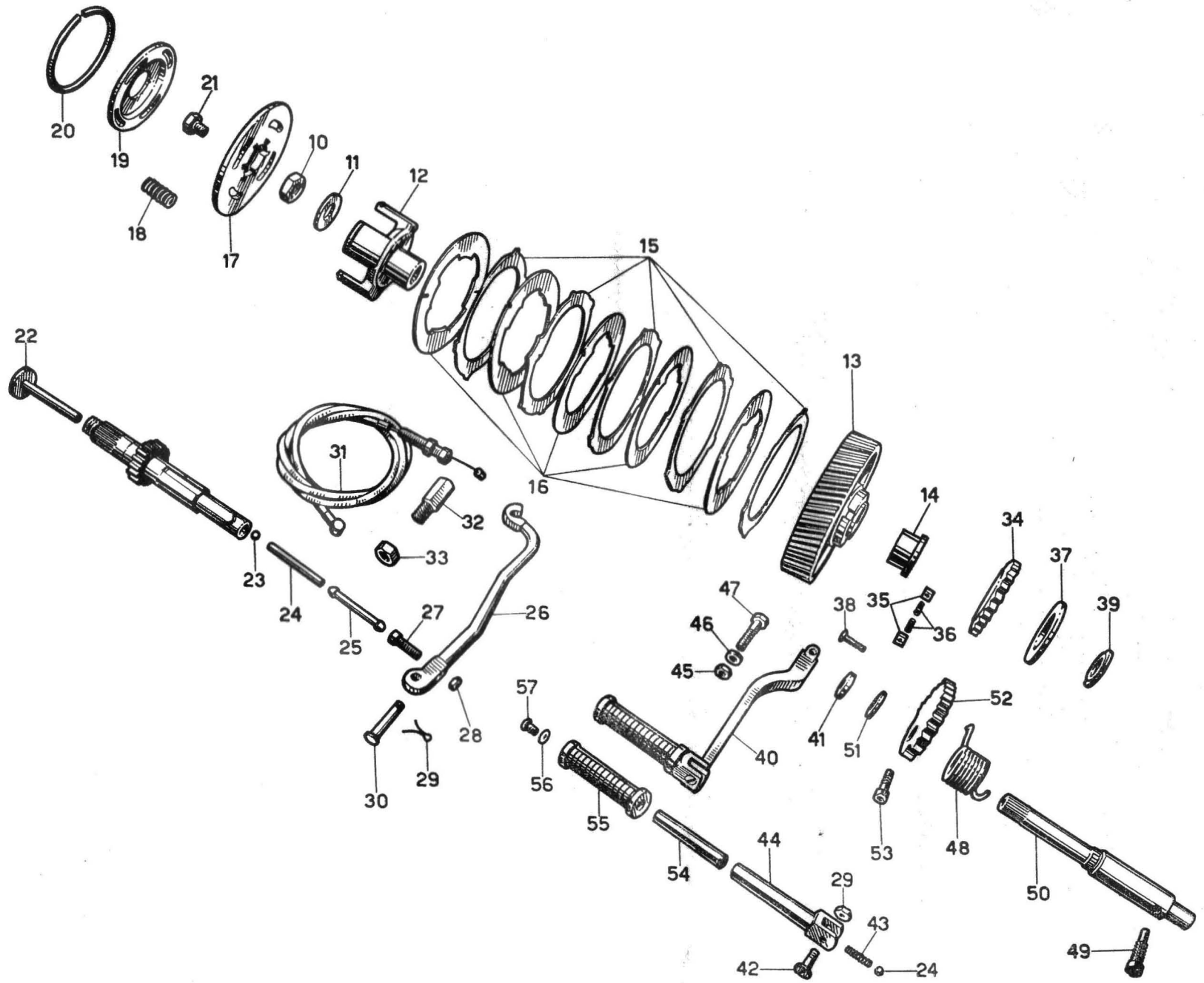


PLATE 7 TRIAL MODEL
Gear Box

GROUP : Gears - Shafts - Gear control

Fig. No.	Order No.	Description	Quantity	Notes
10	55 25 09 50	Lever, gearshift	1	
11	32 25 10 00	Rubber, gearshift lever	2	
12	98 10 60 22	Bolt, lever to shaft	1	
13	95 10 01 30	Washer, long, screw selector cam securing	2	
14	55 23 68 00	Starter pin	1	
15	55 23 82 00	Spring, selector return	1	
16	55 23 78 00	Screw, selector adjusting	1	
17	92 70 01 22	Nut, selector adjusting screw	1	
18	95 10 14 30	Washer, selector adjusting screw	1	
19	55 23 64 00	Body, inner, selector	1	
20	55 23 79 00	Pawl, selector	2	
21	55 23 85 00	Cam, selector	1	
22	98 38 60 05	Screw, short, selector cam securing	1	
23	92 60 22 06	Nut, selector cam securing screw	2	
24	98 38 60 36	Screw, long, selector cam securing	2	
25	94 32 10 49	Spring, pawls	2	
26	38 23 77 00	Pawl, thrust	2	
27	55 23 44 00	Selector drum	1	
28	95 10 02 22	Washer, selector drum	1	
29	55 23 52 00	Pin, selector drum	1	
30	90 27 10 08	Circlip, selector drum pin	1	
31	55 23 47 00	Pawl, selector drum clamping	1	
32	94 32 10 63	Spring, selector drum pawl	1	
32/1	55 23 05 00	Fork, gearshift	2	
33	55 23 24 00	Spindle, fork shift	1	
34	55 21 05 00	Mainshaft, gear box	1	
35	93 70 12 41	Lockring, engine pinion retaining	1	
36	95 18 10 25	Washer, lockring retaining	1	
37	55 33 05 50	Chain sprocket	1	15 teeth
38	24 33 19 00	Spacer, chain sprocket	1	
39	55 21 27 50	Top speed gear, c/w bushing	1	
40	55 21 30 50	Bushing, high gear	1	
41	55 21 14 00	3rd Gear, driving, sliding on mainshaft	1	
42	55 21 47 00	2rd Gear, driving, on mainshaft	1	
43	90 27 10 20	Seeger ring	2	« 20 e » type, special
44	55 21 36 50	Layshaft	1	
45	55 21 40 50	1st Gear, driven	1	
46	91 11 12 10	Bushing, 1st gear driven	1	
47	55 21 14 50	3rd Gear, driven, sliding on layshaft	1	
48	55 21 48 50	3rd, Gear, driven, on layshaft	1	

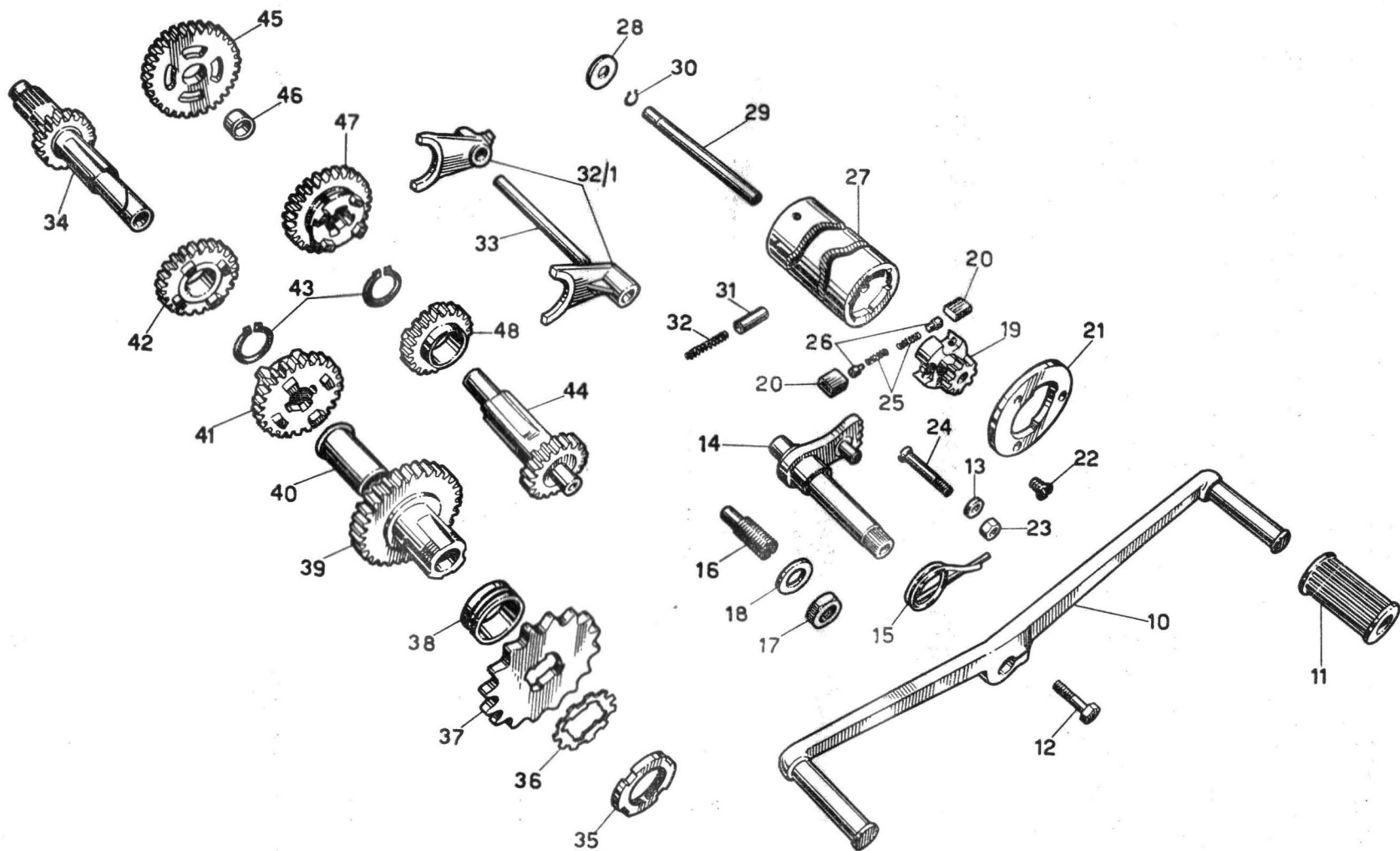


PLATE 8 TRIAL MODEL
Frame

GROUP : **Frame - Rear fender - Seat-Stand - Tool box**

Fig. No.	Order No.	Description	Quantity	Notes
10	55 40 02 50	Frame	1	
11	91 11 14 12	Bushing, pedal pivot	2	
12	55 43 03 50	Center stand	1	
13	55 41 91 50	Connector, stand spring	1	
14	55 41 98 50	Stud, stand connector securing	1	
15	24 43 40 00	Stand spring	1	
15/1	95 50 01 20	Cotter pin, stud connector	1	
16	55 44 02 85	Footrest, R/H	1	
16/1	55 44 04 85	Pivot, L/H footrest	1	
17	55 44 13 85	Footrest, L/H	1	
17/1	55 44 14 50	Pivot, R. H footrest	1	
17/2	98 10 80 30	Bolt, Pedal to pivot	2	
17/3	92 60 22 08	Nut, pedal to pivot bolt	2	
18	36 44 32 00	Rubber, foot rest	2	
19	98 39 10 48	Bolt, foot rest to frame	2	
20	95 10 03 15	Washer, footrest bolt	2	
21	55 40 84 50	Plate, engine protection	1	
22	98 10 81 87	Tie rod, engine to frame, front	2	
23	92 70 10 87	Nut, front studs	6	
24	95 10 12 31	Washer, front studs	4	
25	98 11 02 20	Tie rod, engine to frame, bottom	1	
26	95 10 03 11	Washer, bottom tie rod	2	
27	92 60 22 10	Nut, bottom tie rod	1	
28	55 43 87 50	Splashguard, front	1	
29	92 60 22 06	Nut, splashguard bolt, rear fender bolt, plate number, and tool box to frame	10	
30	95 12 00 65	Spring Washer, tool box securing bolt to frame	3	
31	98 02 43 12	Bolt, splashguard securing, rear fender, and bottom tool box	3	
32	55 46 05 50	Seat	1	
33	55 46 23 50	Rear connector	1	
34	55 46 08 50	Bracket, front seat securing	1	
35	98 10 70 14	Bolt, L/H seat securing, rear	1	
36	98 10 70 21	Bolt, R/H seat securing, rear	1	
37	95 10 01 73	Washer, rear seat securing bolts	2	
37/1	95 12 00 85	Washer, stand and front seat securing nuts	4	
38	55 43 70 50	Rear fender	1	
39	91 55 10 53	Grommet	1	
40	98 10 60 30	Bolt, rear fender fixing	2	
41	95 10 01 39	Washer, rear fender fixing bolts	2	
42	91 18 07 10	Spacer, fender securing to stays	2	
43	95 02 11 06	Washer, spring, fender to stay bolts and splashguard securing	2	
44	55 47 50 00	Plate number	1	
45	98 34 60 10	Bolt, number plate securing, top	1	
46	95 10 01 30	Washer, number plate securing top bolt, tool box securing bolts and stand spring holder	7	

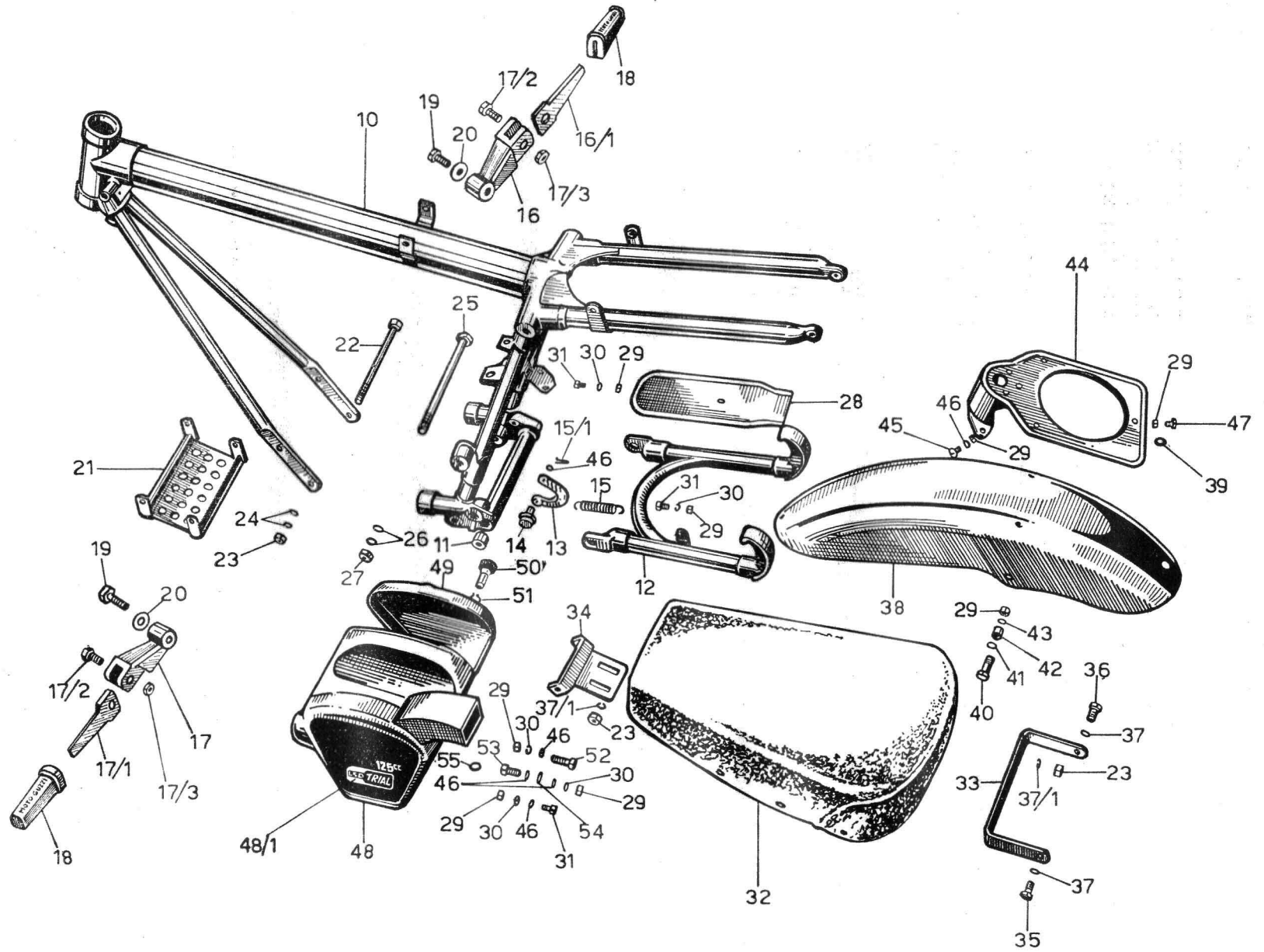


PLATE 8 TRIAL MODEL
Frame

GROUP : **Frame - Rear fender - Seat-Stand - Tool box**

Fig. No.	Order No.	Description	Quantity	Notes
47	98 10 60 11	Bolt , number plate securing, bottom	1	
48	55 47 60 50	Tool and battery box	1	
48/1	55 91 75 50	Decal , ISDT emblem	1	
49	55 47 62 00	Cover , tool box	1	
50	32 47 85 00	Thumbscrew , tool box locking	1	
51	32 47 86 00	Washer , thumscrew	1	
52	98 10 60 21	Bolt , tool box to frame, bottom R/H	1	
53	98 10 60 15	Bolt , tool box to frame, top	1	
54	95 10 01 39	Washer , tool box to frame top bolt	1	
55	91 55 10 81	Grommet , on tool box	1	

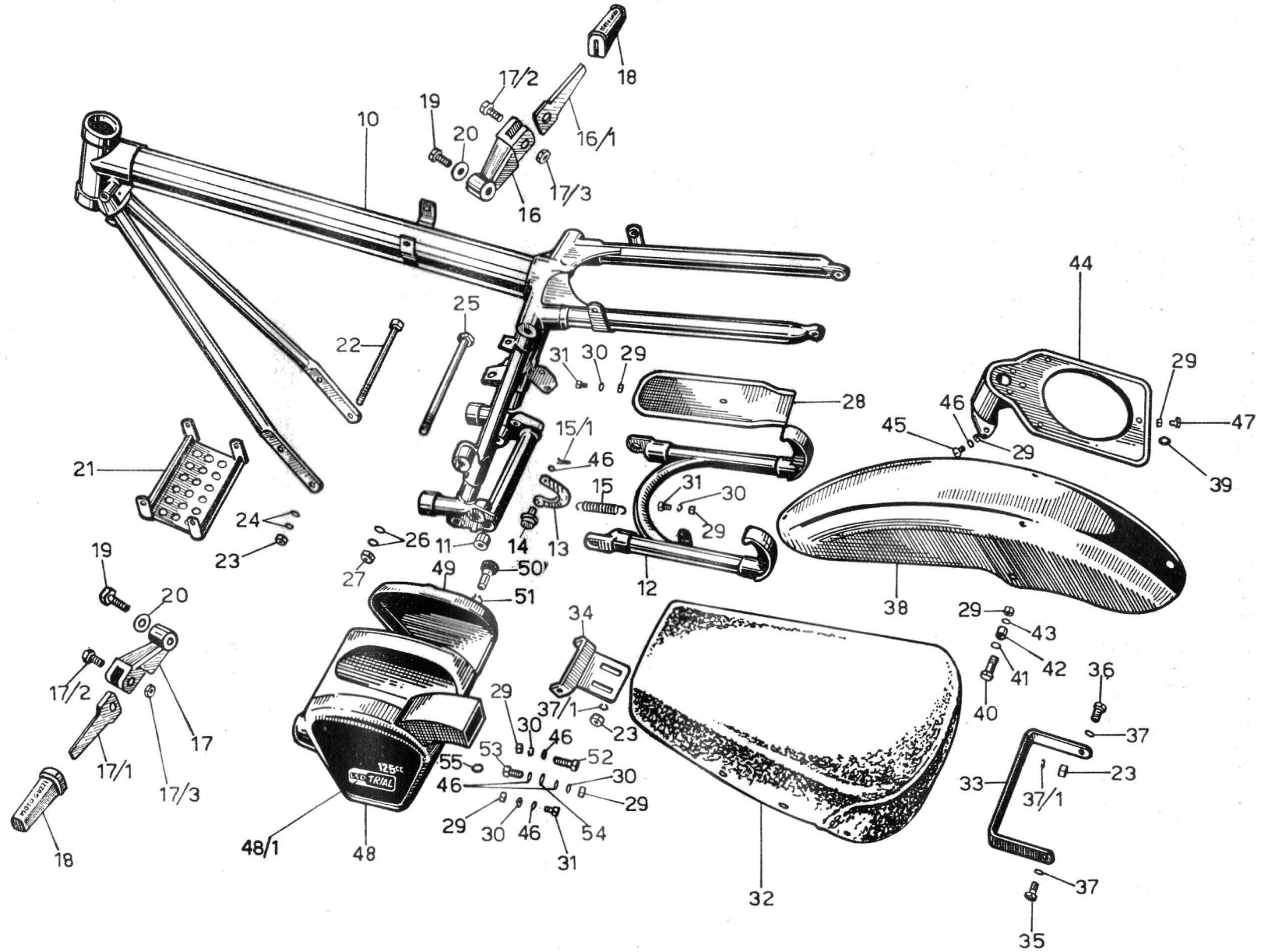


PLATE 9 TRIAL MODEL
Frame

GROUP : Steering - Suspensions - Front fork - Swinging
fork - Front fender

Fig. No.	Order No.	Description	Quantity	Notes
10	55 49 02 50	Front fork, complete	1	
11	55 52 25 50	Slider, R/H	1	
12	92 60 22 08	Nut, bottom link bolt and top linking plate bolt	2	
13	95 10 02 59	Washer, end bolt	2	
14	98 10 80 45	Bolt, bottom end securing and linking plate	2	
15	55 52 26 50	Slider, left	1	
16	55 52 40 50	Bushing in sliders, top	2	
17	55 52 59 50	Plug, bottom, fork tube	2	
18	55 52 58 50	Bushing, bottom, fork tube	2	
19	55 52 54 50	Fork tube	2	
20	55 52 77 50	Housing, spring	2	
21	90 70 63 45	Washer, in spring housing	2	
22	90 56 30 37	Seal, fork tubes	2	
23	95 10 09 25	Washer, in spring housing	2	
24	55 52 66 50	Spring, fork	2	
25	55 49 61 50	Headlamp Bracket, R/H	1	
26	55 49 62 50	Headlamp Bracket, L/H	1	
27	55 49 27 50	Ring, guiding	2	
28	55 49 28 50	Cap, guiding ring	2	
29	91 18 31 29	Distance piece	2	
30	55 50 45 50	Plug, top fork	2	
31	95 10 08 37	Washer, top fork plug and bottom yoke nut	3	
32	90 70 61 78	Washer, top fork plugs	2	
33	55 49 40 50	Yoke, bottom, c/w steering tube	1	
34	55 51 33 50	Nut, steering tube	1	
35	55 49 31 50	Top Linking plate	1	
36	32 51 55 00	Gasket, cone, top	1	
37	32 51 49 00	Cone, top steering	1	
38	92 29 57 06	Ball, steering cups	34	
39	55 51 50 50	Cone, steering, top	1	
40	55 51 51 50	Cup, steering, bottom	1	
41	32 51 52 00	Cone, steering, bottom	1	
42	98 05 25 80	Bolt, fork tube to yoke	2	
43	95 10 03 11	Washer, yoke bolts	4	
44	92 60 22 10	Nut, yoke bolts	2	
45	98 30 50 09	Screw, oil discharge on slider	2	
46	90 71 40 51	Washer, oil discharge screw	2	
47	55 43 43 50	Front Fender, complete	1	

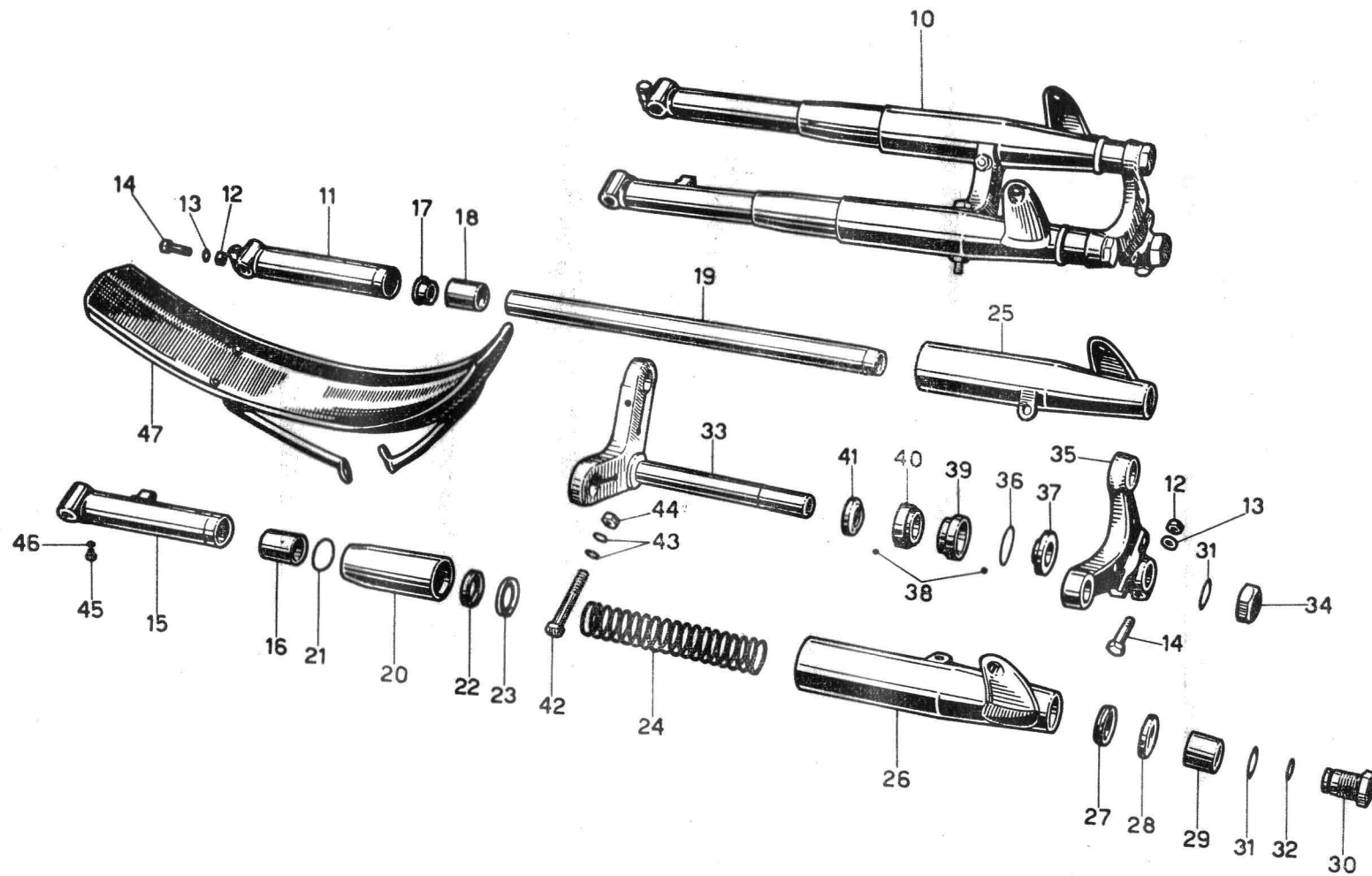


PLATE 10 TRIAL MODEL
Steering

GROUP : Handelbars and levers (as fitted on 1st series)

Fig. No.	Order No.	Description	Quantity	Notes
10	55 60 02 50	Handlebar, c/w levers	1	
11	55 50 05 50	Clamp, handlebar	2	
12	55 50 06 50	Connector, handlebar clamp	2	
13	92 70 10 62	Nut, connector securing to top plate	4	
14	95 12 00 65	Spring Washer, connector to top plate	4	
15	55 60 56 00	Lever, front brake	1	
16	55 60 57 00	Lever, clutch	1	
17	98 32 60 17	Screw, clutch and front brake lever fixing	2	
18	95 02 11 06	Spring Washer, lever fixing screw	2	
19	92 60 24 06	Nut, lever screw	2	
20	95 79 02 37	Adjuster, brake and clutch cables	2	
21	93 76 00 72	Thumbnut, cable adjusting	2	
22	55 60 35 25	Handgrip, R/H	1	
23	36 60 34 00	Twist grip, throttle control	1	
24	55 60 30 25	Handgrip, L/H	1	

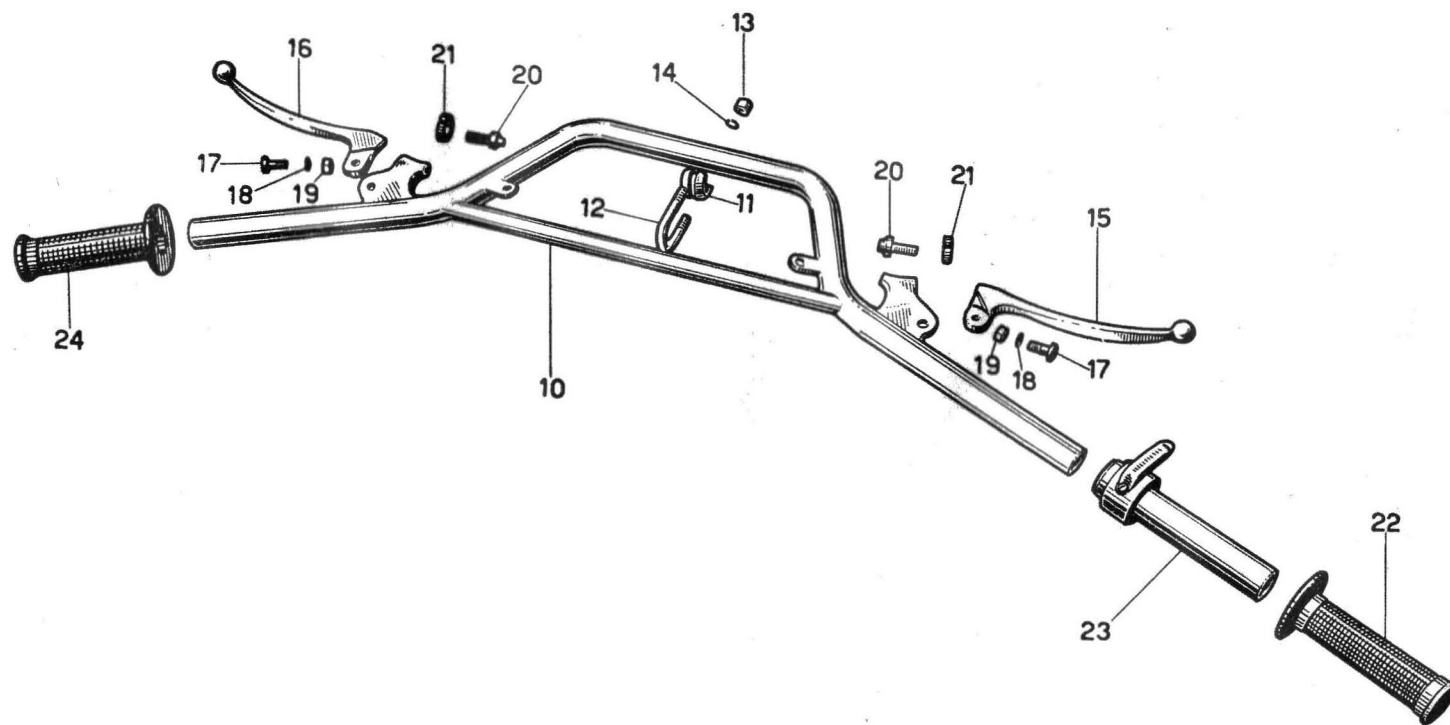


PLATE 10/1 TRIAL MODEL
Steering

GROUP : Handlebar and levers

Fig. No.	Order No.	Description	Quantity	Notes
10	55 60 01 76	Handlebar, c/w levers	1	
10/1	55 60 02 76	Handlebar, bend only	1	
11	55 50 06 50	Connector, handlebar clamp	2	
12	55 50 05 50	Clamp, handlebar	2	
13	92 70 10 62	Nut, handlebar clamp	4	
13/1	95 12 00 65	Spring Washer, handlebar clamp	4	
14	55 60 54 85	Lever, front brake, complete	1	
15	55 60 56 00	Lever, front brake, bare	1	
16	55 60 10 85	Bracket, adjustable, lever	1	
17	98 32 60 17	Screw, lever fixing to bracket	2	
18	95 02 11 06	Washer, lever fixing screw	2	
19	92 60 24 06	Nut, lever fixing screw	2	
20	95 79 02 37	Adjuster, clutch and brake cables	2	
21	93 76 00 72	Thumbnut, cable adjuster	2	
22	98 62 03 18	Screw, lever fixing to handlebar	2	
23	55 60 55 85	Lever, clutch, complete	1	
24	55 60 57 00	Lever, clutch, bare	1	
25	55 60 19 85	Bracket, adjustable, for lever	1	
26	36 60 34 00	Twistgrip, throttle control	1	
27	55 60 35 00	Handgrip, R/H	1	
28	55 60 30 00	Handgrip, L/H	1	

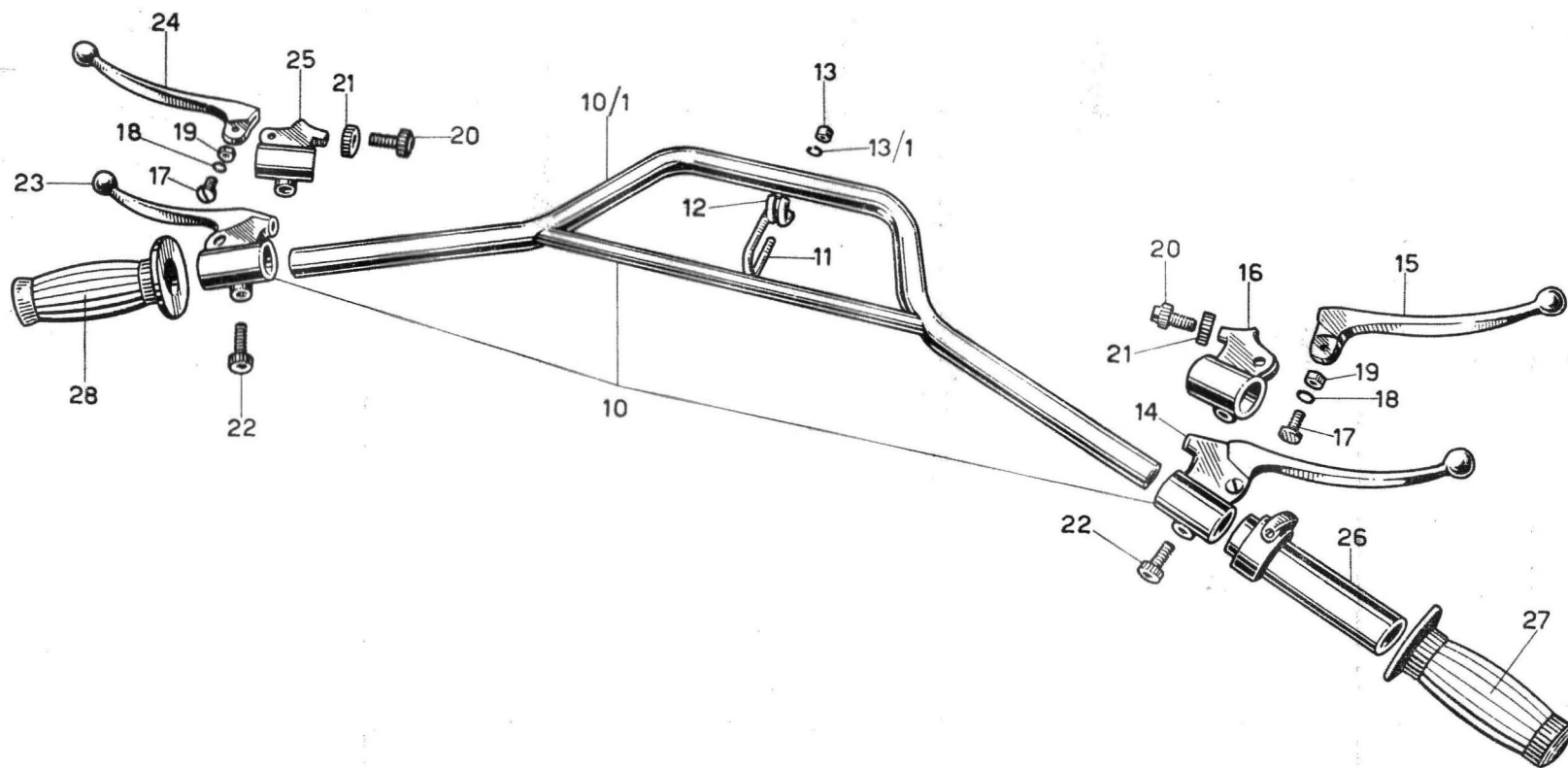


PLATE 11 TRIAL MODEL
Frame

GROUP : **Swinging fork - Rear suspension - Hydraulic
dampers - Chainguard**

Fig. No.	Order No.	Description	Quantity	Notes
10	55 54 02 50	Swinging Fork	1	
11	55 55 36 00	Bushing , shock-absorbing	2	
12	92 70 11 24	Nut , swinging fork spindle	1	
13	95 10 14 30	Washer , fork spindle nut	2	
14	55 56 94 00	Washer , fork bushing	4	
15	98 11 22 31	Spindle , swinging fork	1	
16	55 47 30 50	Chainguard	1	
17	98 10 70 13	Bolt , chainguard securing, center and front	2	
18	95 10 01 73	Washer , chainguard bolt	2	
19	55 55 02 25	Shock absorbing unit	2	
20	32 55 16 00	Bushing , shock absorbers	4	
21	55 55 23 25	Spring , shock absorbers	2	
22	98 10 90 55	Bolt , top L/H and bottom R/H	2	
23	98 10 90 62	Bolt , top R/H	1	
24	98 39 09 35	Bolt , left bottom	1	
25	95 10 02 91	Washer , damper securing bolts	5	
26	55 55 15 55	Shim , top right	1	
27	55 55 44 50	Shim , top left	1	
28	55 55 45 50	Shim , right bottom	1	

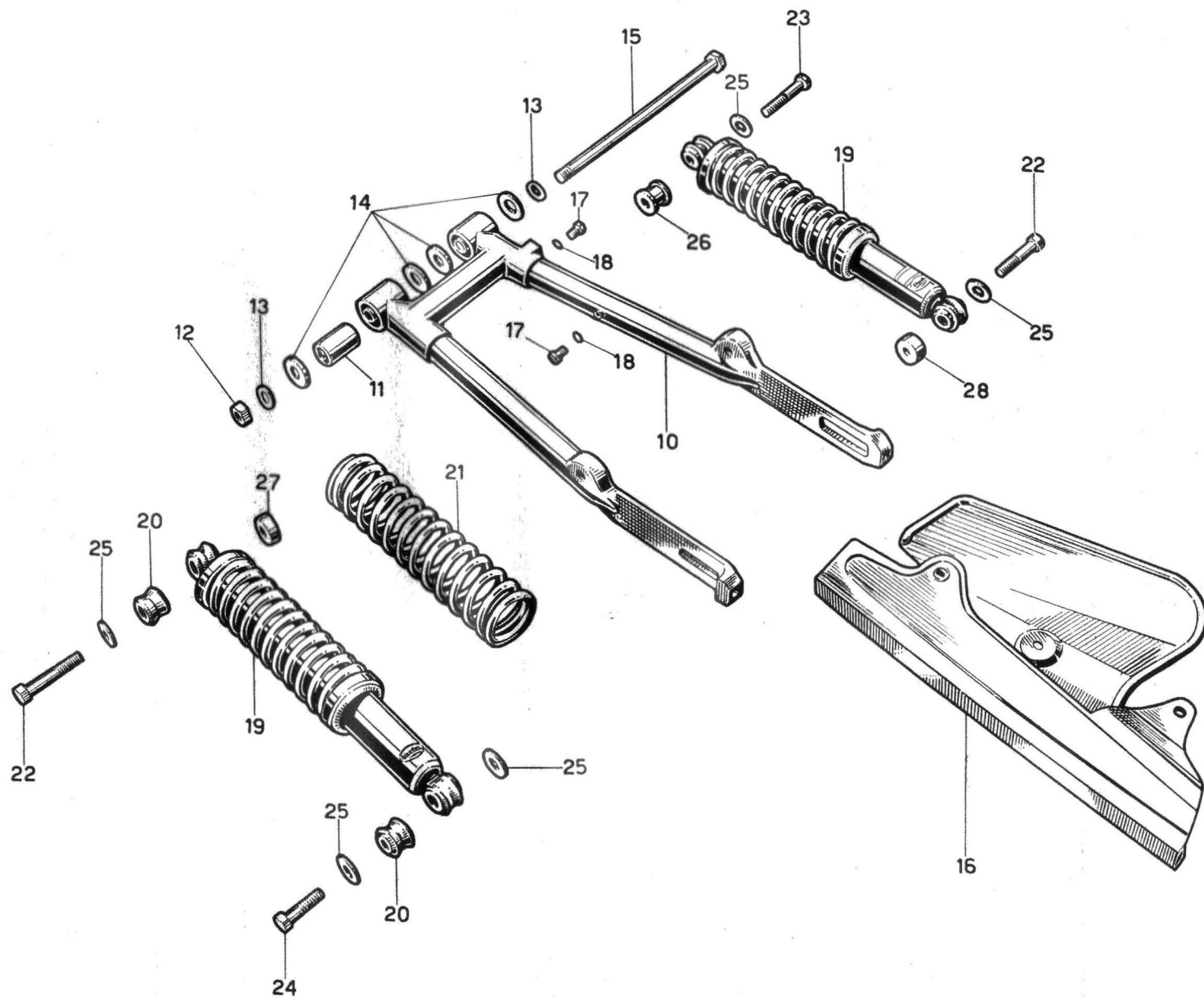


PLATE 12 TRIAL MODEL
Frame

GROUP : Front wheel - Front hub and controls

Fig. No.	Order No.	Description	Quantity	Notes
10	55 61 02 50	Front Wheel, complete	1	
11	55 61 08 50	Rim, front wheel	1	19 x 2 1/4
12	55 61 15 50	Spoke, front wheel, c/w nipple	32	
13	55 61 30 50	Hub, front wheel	1	
14	55 61 41 50	Spindle, front wheel	1	
15	55 62 02 50	Cover, front hub	1	
16	91 11 11 22	Bush, cam on hub cover	1	
17	32 62 50 00	Lever, cam operating	1	
18	98 70 60 20	Screw, lever fixing shoes	1	
19	55 62 25 50	Cam, front brake shoes	1	
20	55 62 05 50	Brake Shoe, top, c/w linings and end plate	1	
21	55 62 08 50	Brake Shoe, bottom c/w linings and end plate	1	
22	32 62 21 00	Spring front brake shoe, cam side	1	
23	32 62 21 25	Spring, front brake shoe	1	
24	55 61 26 50	Stud nut c/w spacing collar	1	
25	95 19 02 50	Cap, gland retaining, cover side	1	
26	90 71 32 40	Felt Washer, on hub, cover side	1	
27	95 10 08 21	Thrust Washer	1	
28	90 27 20 42	Circlip	1	Type 42 i
29	92 20 14 15	Bearing, ball	1	15x42x13 (RIV 3 B)
30	55 61 52 50	Distance piece	1	
31	92 20 12 15	Ball bearing	1	15x35x11 (RIV 02 A)
32	32 61 47 00	Gasket, felt retaining	1	
33	90 71 32 32	Gasket, in spacing collar	1	
34	32 51 56 00	Spacing collar, front wheel	1	
35	55 62 54 50	Cable, front brake	1	

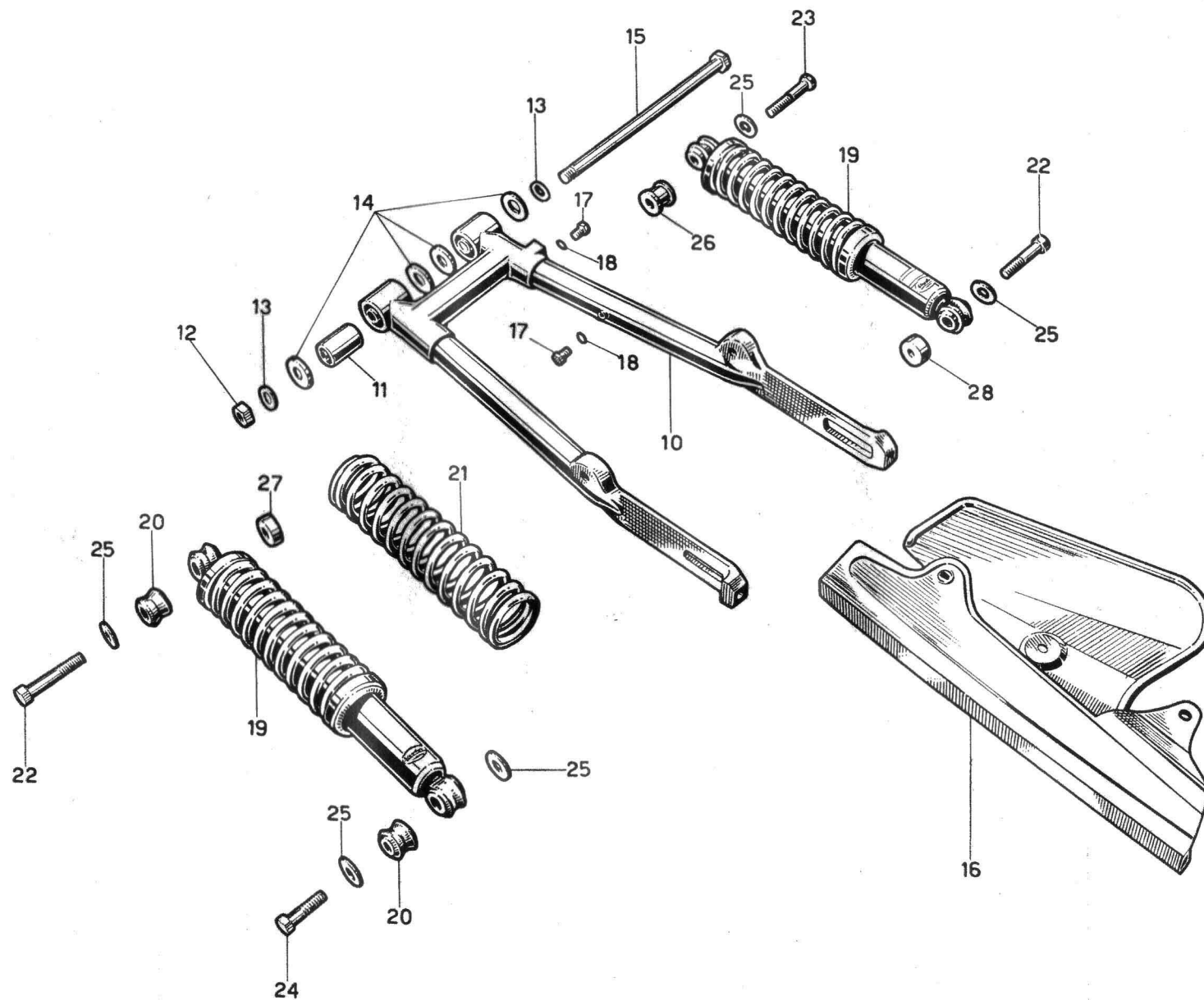


Fig. No.	Order No.	Description	Quantity	Notes
10	55 61 02 50	Front Wheel, complete	1	
11	55 61 08 50	Rim, front wheel	1	19 x 2 1/4
12	55 61 15 50	Spoke, front wheel, c/w nipple	32	
13	55 61 30 50	Hub, front wheel	1	
14	55 61 41 50	Spindle, front wheel	1	
15	55 62 02 50	Cover, front hub	1	
16	91 11 11 22	Bush, cam on hub cover	1	
17	32 62 50 00	Lever, cam operating	1	
18	98 70 60 20	Screw, lever fixing shoes	1	
19	55 62 25 50	Cam, front brake shoes	1	
20	55 62 05 50	Brake Shoe, top, c/w linings and end plate	1	
21	55 62 08 50	Brake Shoe, bottom c/w linings and end plate	1	
22	32 62 21 00	Spring front brake shoe, cam side	1	
23	32 62 21 25	Spring, front brake shoe	1	
24	55 61 26 50	Stud nut c/w spacing collar	1	
25	95 19 02 50	Cap, gland retaining, cover side	1	
26	90 71 32 40	Felt Washer, on hub, cover side	1	
27	95 10 08 21	Thrust Washer	1	
28	90 27 20 42	Circlip	1	Type 42 i
29	92 20 14 15	Bearing, ball	1	15x42x13 (RIV 3 B)
30	55 61 52 50	Distance piece	1	
31	92 20 12 15	Ball bearing	1	15x35x11 (RIV 02 A)
32	32 61 47 00	Gasket, felt retaining	1	
33	90 71 32 32	Gasket, in spacing collar	1	
34	32 51 56 00	Spacing collar, front wheel	1	
35	55 62 54 50	Cable, front brake	1	

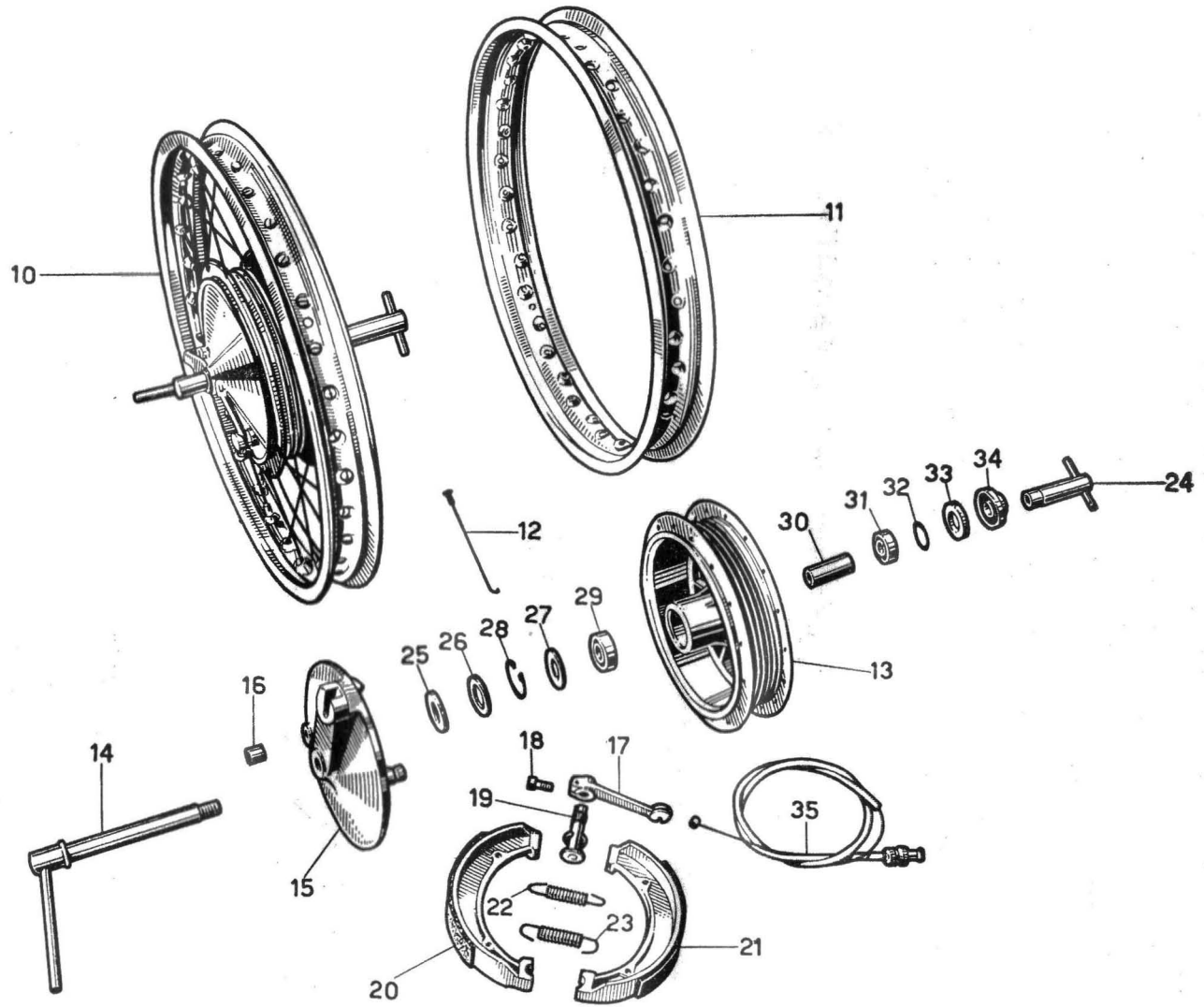


PLATE 13 TRIAL MODEL
Frame

GROUP : Rear wheel - Hub - Rear brake and control

Fig. No.	Order No.	Description	Quantity	Notes
10	55 63 02 50	Rear wheel, complete	1	
11	55 63 07 50	Rim, rear wheel	1	19 x 2 1/4
12	55 63 10 50	Spoke, rear wheel, hub side, c/w nipple	16	
13	55 63 13 50	Spoke, rear wheel, left side, c/w nipple	16	
14	55 63 20 50	Hub, complete	1	
15	55 63 33 50	Spindle, rear wheel	1	
16	92 70 02 03	Nut, hollow spindle	1	
17	55 33 63 50	Tensioner, L/H	1	
18	55 33 64 50	Tensioner, R/H	1	
19	55 33 67 50	Stud, right and left tensioner	2	
20	32 47 86 00	Seeger ring, tensioner	2	
21	55 67 14 50	Brake lever, on cam	1	
22	98 70 60 20	Screw, brake lever securing to cam	1	
23	55 63 52 50	Brake plate, complete	1	
24	91 11 11 23	Bushing, on brake plate, for cam	1	
25	32 61 45 00	Oil retainer, on brake plate	1	
26	92 70 10 87	Nut, brake plate pin	1	
27	95 10 02 59	Washer, brake plate pin nut	1	
28	32 63 62 00	Pin, brake plate	1	
29	32 63 90 00	Cam, brake shoes	1	
30	32 63 70 00	Shoe, rear brake	2	
31	32 63 81 00	Spring, rear brake shoe, cam side	1	
32	32 62 21 00	Spring, rear brake shoe	1	
33	95 71 63 65	Roller, cam operating lever	1	
34	95 73 02 60	Adjuster, brake rod	1	
35	55 67 63 50	Ball, brake rod	1	
36	55 67 60 50	Brake rod	1	
37	95 74 01 60	Fork, brake rod	1	
38	95 78 02 49	Cotter pin, rod fork	1	
39	95 50 01 20	Split pin, rod fork cotter pin	1	
40	55 67 65 50	Pivot, rear brake operating lever	1	
41	55 67 69 50	Washer, brake pivot	1	
42	55 67 70 00	Pedal, rear brake	1	
43	92 70 00 73	Nut, pedal to pivot bolt	1	
44	98 10 70 35	Bolt, pedal to pivot	1	
45	92 60 22 06	Nut, wheel sprocket bolt and brake rod adjuster	9	
46	95 10 01 19	Washer, sprocket securing bolt to brake drum	8	
47	98 70 60 23	Bolt, wheel sprocket securing	8	
48	32 33 37 50	Wheel sprocket, on brake drum	1	55 teeth
49	55 63 30 50	Drum, rear brake	1	
50	55 63 32 50	Spindle, hollow, drum securing	1	
51	55 63 36 50	Cap, seal retainer	1	
52	90 71 32 80	Seal, brake drum	1	
53	95 10 08 80	Washer, seal retainer	1	

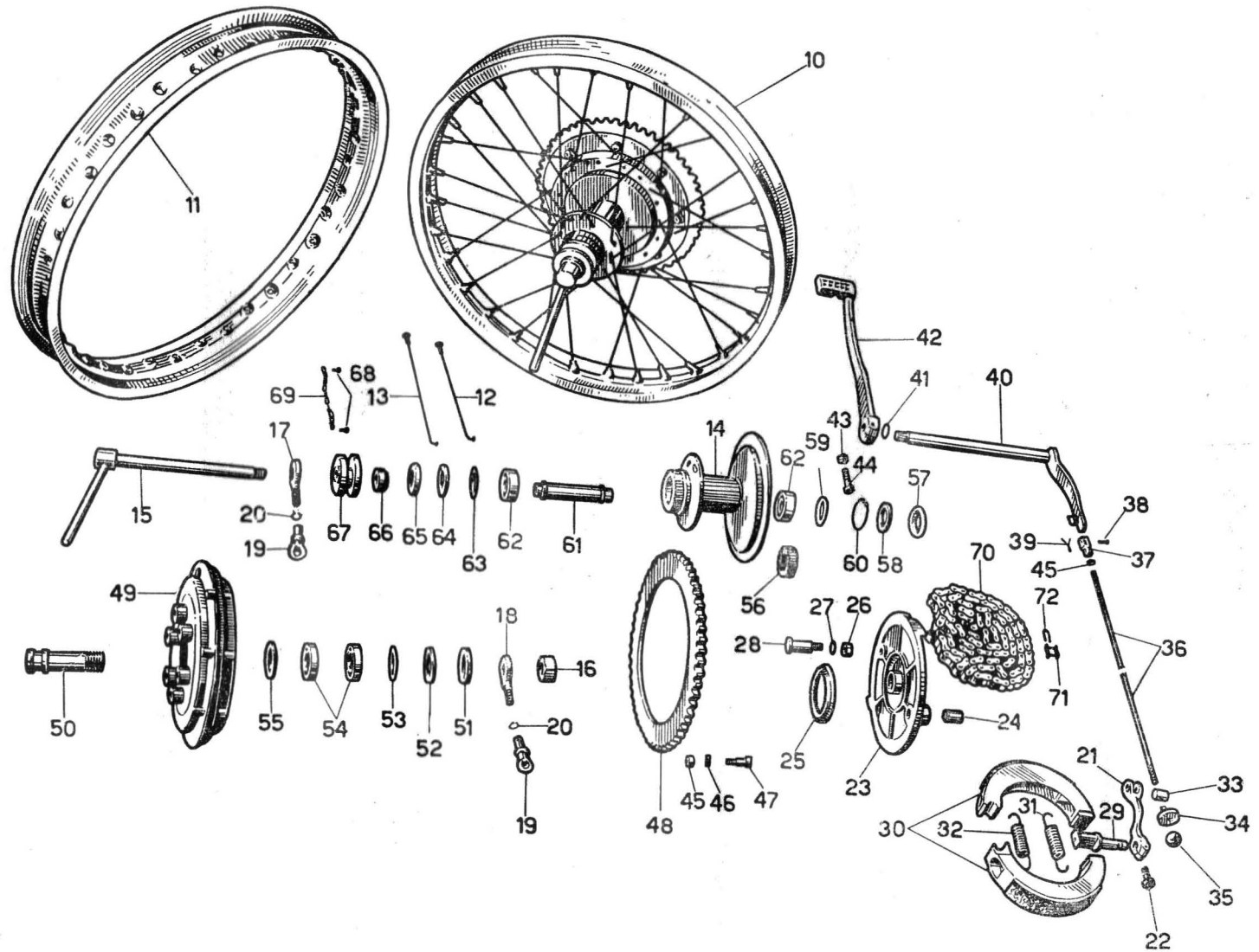


Fig. No.	Order No.	Description	Quantity	Notes
54	92 20 10 20	Ball bearing	2	20x42x8 (RIV EL 20)
55	55 63 35 50	Ring, retaining	1	
56	55 63 68 50	Rubber block	6	
57	32 63 35 00	Dust cap	1	
58	90 71 32 20	Seal, rear hub, rubber cushions side	1	
59	95 10 07 61	Shim, washer retainer	1	
60	90 27 20 40	Circlip, bearing retainer	1	17x40x12 (RIV 01 A)
61	55 63 40 50	Distance piece, bearing to bearing	1	
62	92 20 12 17	Ball bearing, wheel hub	2	
63	95 10 08 57	Retainer, felt washer on hub	1	
64	90 71 32 61	Felt, washer, wheel hub	1	
65	32 63 36 00	Cap, felt retainer	1	
66	55 63 42 50	Spacer	1	
67	55 63 41 50	Distance piece, rear wheel	1	
68	98 30 40 09	Screw, chain securing	1	
69	25 48 22 00	Chain, distance piece	1	
70	55 33 22 75	Drive chain	1	
71	32 33 31 00	Chain link	1	
72	11 33 35 00	Spring, chain link	1	

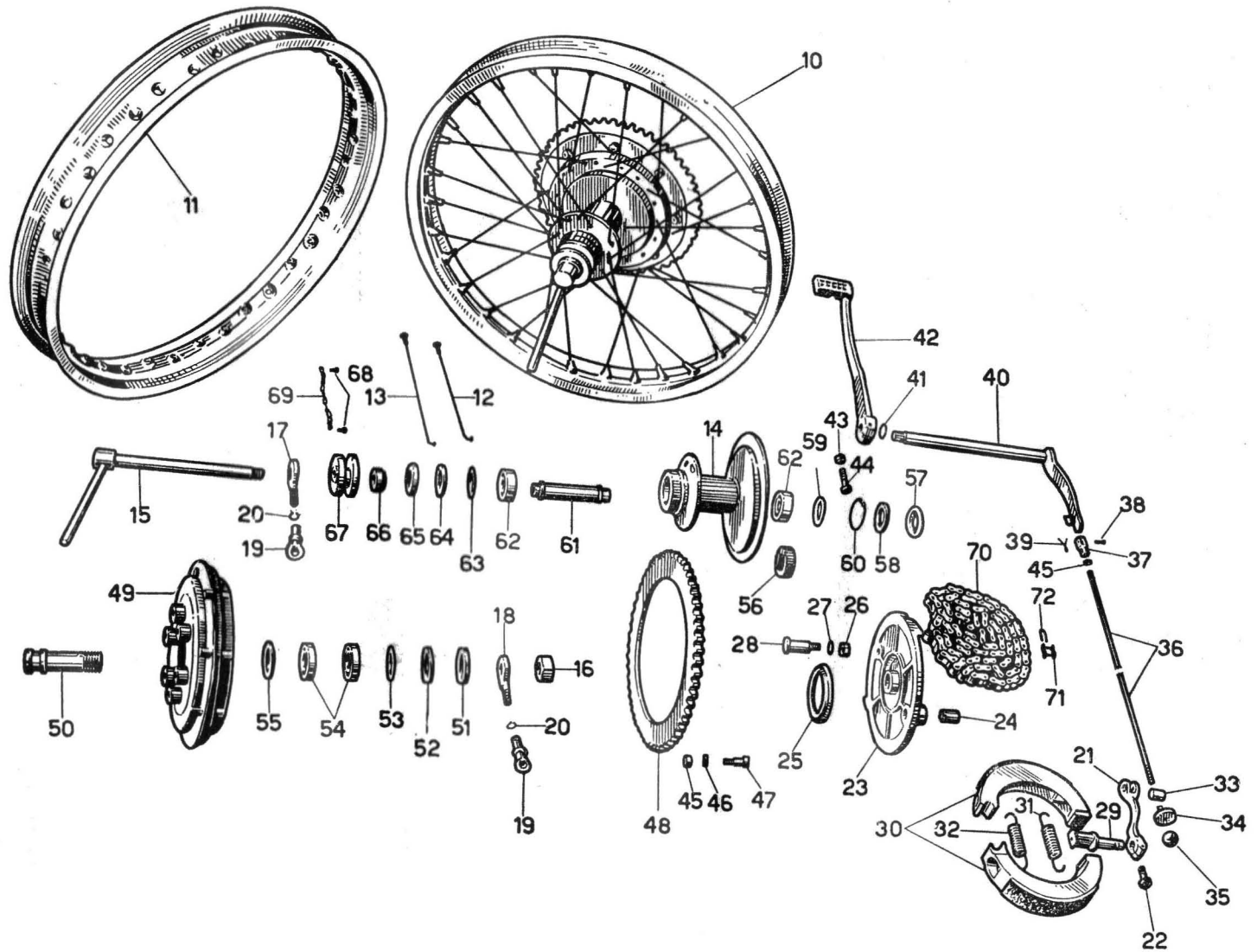


PLATE 14 TRIAL MODEL
Electrical Equipment

GROUP : Flywheel - Outer coil - Spark plug

Fig. No.	Order No.	Description	Quantity	Notes
10	55 71 24 00	Flywheel, complete	1	6034 CEV
11	55 71 65 00	Coil, H.T., external	1	6304 m CEV
12	55 71 88 00	Spring	1	7758 CEV
13	55 71 89 00	Washer	2	7770 CEV
14	55 71 90 00	Circlip	1	7750 CEV
15	55 70 94 00	Lever, automatic advance	1	7752 CEV
16	55 70 93 00	Cam	1	7792 CEV
17	55 70 91 00	Circlip, for cam	1	7374 CEV
17/1	55 71 90 00	Circlip	1	7750 CEV
18	55 70 90 00	Screw, contact breaker	1	3250 CEV
19	55 70 89 00	Cam, contact breaker	1	7521 CEV
20	55 70 98 00	Washer, insulating	1	7375 CEV
21	55 70 88 00	Contact breaker	1	013356 CEV
22	55 71 56 00	Screws and washers, H.T. and L.T. coils	4	0946/1 CEV
23	55 71 51 00	Coil, L.T.	1	01333 CEV
24	55 71 50 00	Coil, H.T.	1	01334 CEV
25	55 70 79 00	Screw, condensor	1	7767 CEV
26	55 70 86 00	Condensor	1	7365 CEV
27	55 70 22 00	Stator plate	1	01332 CEV
28	55 70 16 00	Rotor assembly	1	01337 CEV
28/1	55 71 30 00	Stator plate assembly	1	01338 CEV
29	92 60 22 06	Nut, bracket securing bolt	3	
30	95 12 00 65	Washer, bracket bolt	4	
31	98 10 60 17	Bolt, bracket fixing	2	
32	95 10 01 30	Washer, bracket to coil bolt	1	
33	98 10 60 28	Bolt, bracket to coil securing	1	
34	55 71 68 50	Bracket, coil and horn fixing	1	
35	55 71 73 00	H.T. Lead	1	
36	38 71 74 00	Cap, spark plug	1	
37	55 71 70 50	Spark plug, c/w washer (Bosch n. 275)	1	
38	98 30 40 13	Screw, stator plate to crankcase	3	
39	95 00 12 04	Washer, stator plate to crankcase screw	3	

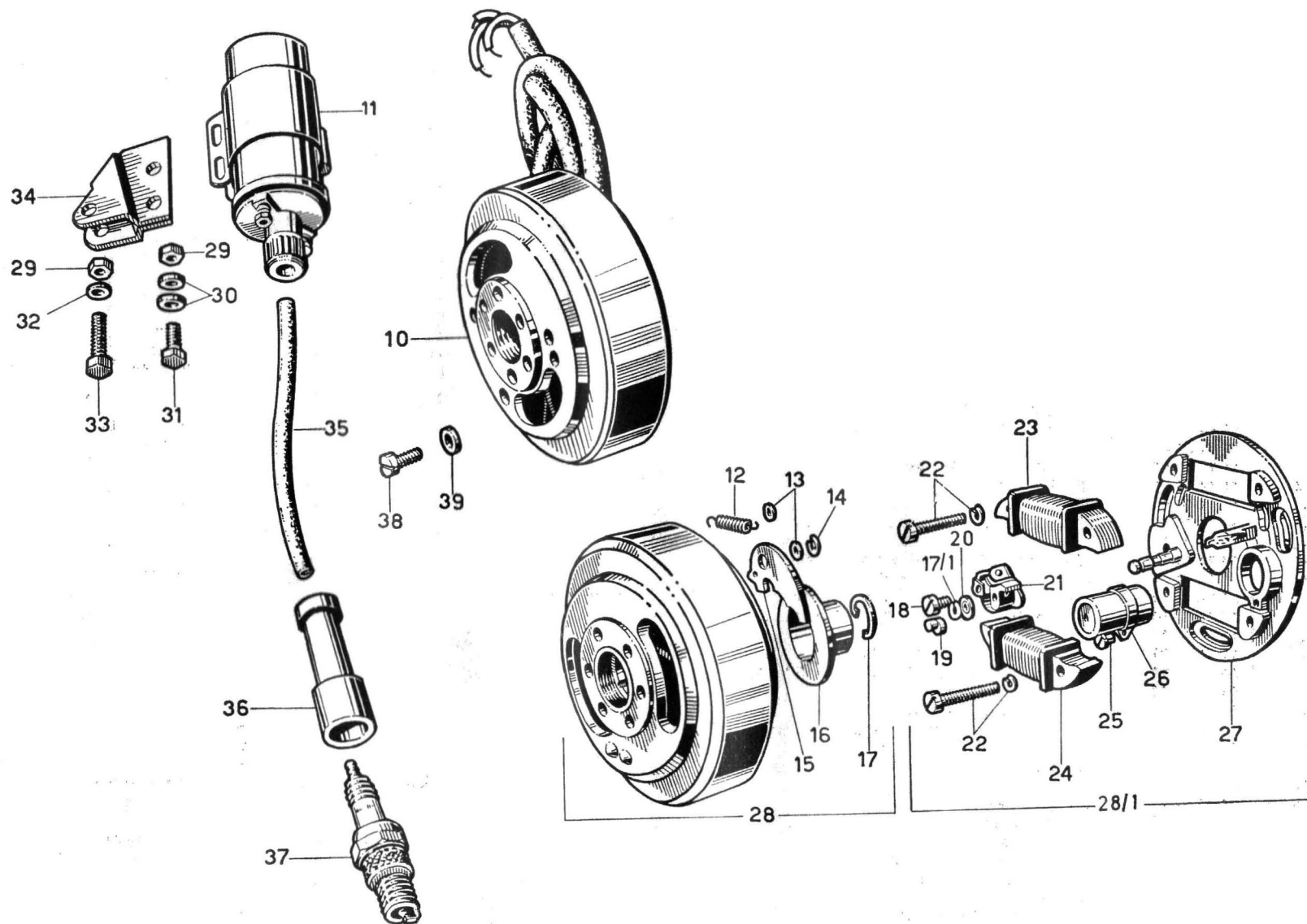


PLATE 15 TRIAL MODEL
Electrical Equipment

GROUP : Lighting and accessories - Battery - Headlight -
Tail light - Stop cutout - Horn - Cable harness

Fig. No.	Order No.	Description	Quantity	Notes
10	55 70 45 00	Battery, 6 V 7 Ah	1	
11	55 70 56 00	Felt gasket, battery protection	1	
12	55 70 55 00	Strap, battery securing	1	
13	55 50 30 76	Grid, headlight lens protection	1	
13/1	91 18 08 07	Shim, headlight bracket	1	
14	55 74 05 85	Headlight, c/w switch	1	035910
15	98 02 44 22	Bolt, headlight to fork	2	31766
16	95 12 00 85	Washer, headlight to fork	2	12816
17	55 76 88 85	Warning light, red, main light on	1	035080
18	93 45 01 10	Bulb, red warning light, 6V - 0,6 W	1	EL3067
19	55 76 89 85	Warning light, green, pilot light on	1	035081
20	55 74 94 85	Grommet, cylindrical	2	39360
21	55 74 88 85	Grommet, tapered	1	39340
21/1	55 76 86 85	Block, insulating, c/w socket	1	036746
22	55 74 03 85	Headlight insert	1	035306
22/2	55 74 03 86	Rim, headlight	1	03550
23	93 45 03 12	Bulb, parking light, 6V - 3W	1	EL3002
24	55 74 34 85	Switch, main	1	036424
25	55 74 41 85	Ignition key assembly	1	036110
26	55 74 48 85	Ignition key	1	42552
27	55 74 30 85	Terminal box, c/w diode	1	036883
28	55 74 25 85	Fuse, 15 Ah	1	EL6001
29	55 74 39 85	Rectifying diode, complete	1	EL5760
30	55 74 60 85	Dimmer switch and horn button	1	036612
31	98 20 04 12	Screw, switch to handlebar	2	31716
	55 74 71 00	Cable harness (red, green, grey, yellow, black, blu, white)	1	
	55 74 73 50	Cable, bipolar, horn, black-black	2	
32	55 74 72 00	Cable, terminal to coil, red	1	
	55 74 79 00	Cable, coil to earth (black)	1	
	55 74 71 17	Cable, stop cutout to tail light (black)	1	
	93 44 28 70	Casing, plate cable protection	1	
33	91 55 10 61	Grommet, lamp cables	1	
34	93 30 22 25	Band, long, cable securing to frame	3	
35	93 30 21 10	Band, medium, cable securing to frame	6	
36	93 30 21 06	Band, short, cable securing to frame	3	
37	24 74 17 26	Tail light plate	1	CEV 01709
38	24 74 52 26	Screen, white, plate illumination	1	CEV 5531
39	93 45 02 12	Bulb, double filament, 6V 3/15W (plate and stop)	1	
40	24 74 09 26	Tail lamp ass.	1	CEV 9241
41	24 74 13 25	Rubber cap, for tail light	1	
41/1	24 73 99 00	Screw, plate securing	2	
42	32 74 11 01	Cutout, stop light	1	
43	92 70 00 50	Nut, cutout fixing screws	2	
44	95 10 00 55	Washer, cutout fixing screws	2	
45	98 30 50 17	Screw, tail light ass. securing	1	
46	55 74 37 50	Horn	1	Marelli T6 AA/RSK-1 6V
47	55 74 38 50	Washer, rubber, for horn	1	
48	98 20 03 12	Screw, horn fixing	6	
49	92 60 00 03	Nut, horn fixing screw	6	

Aprilia

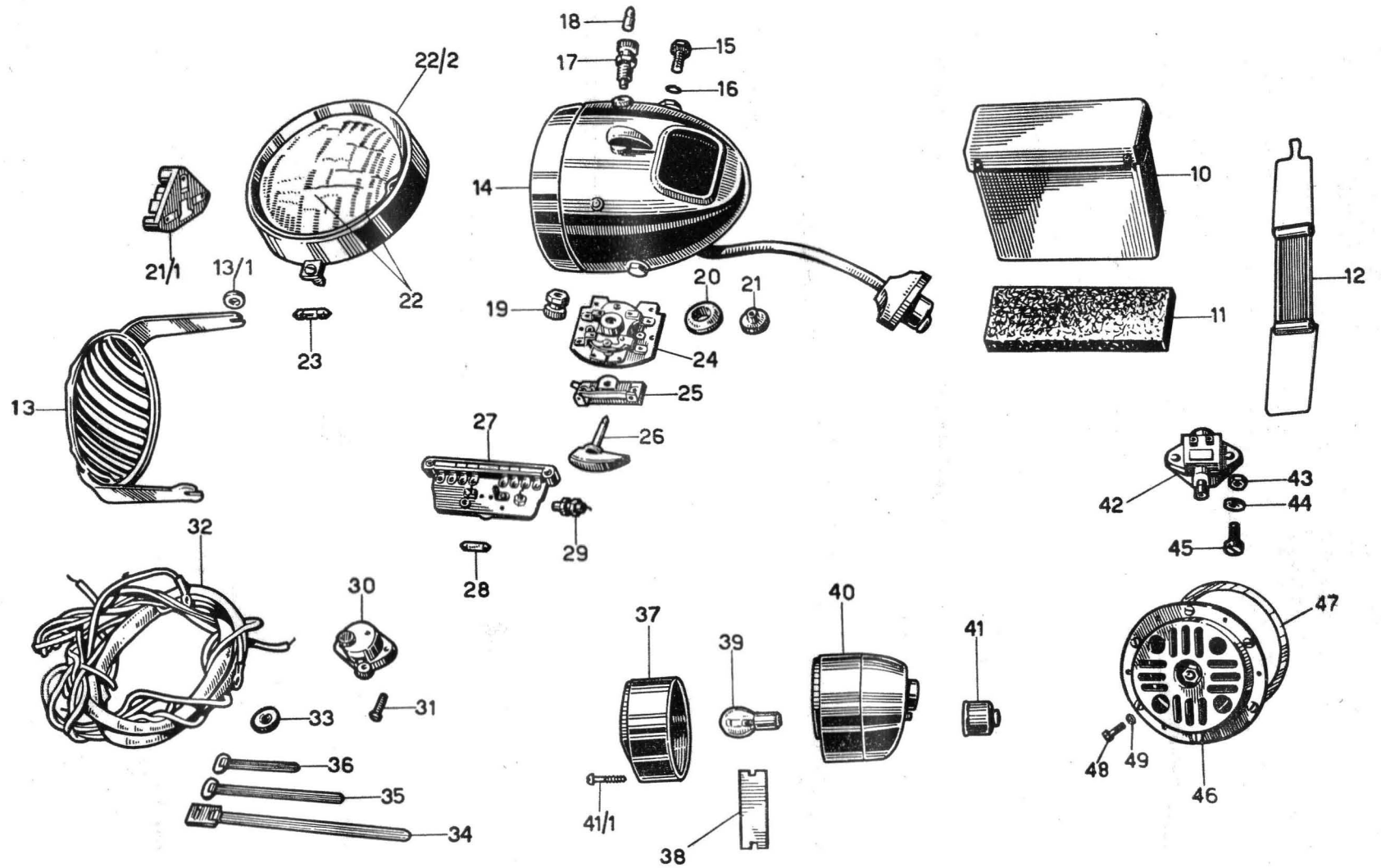
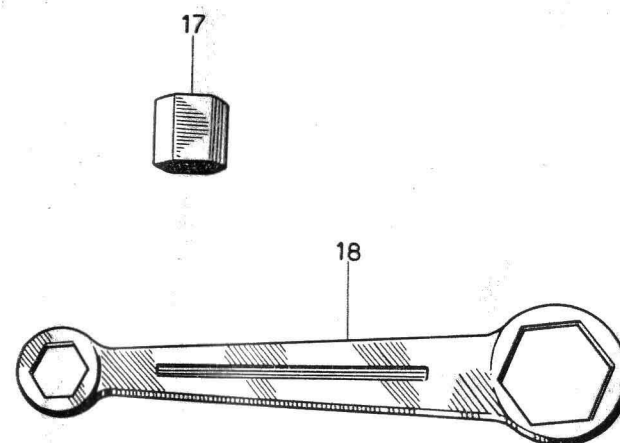
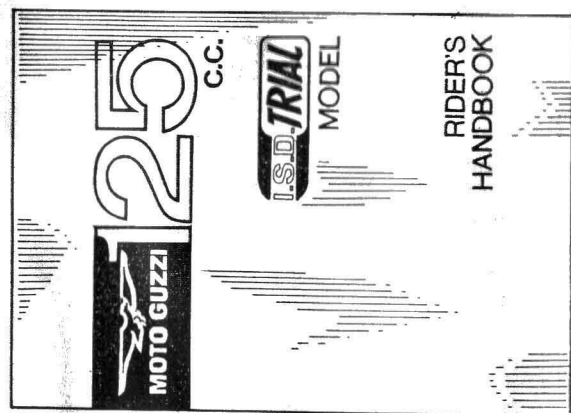
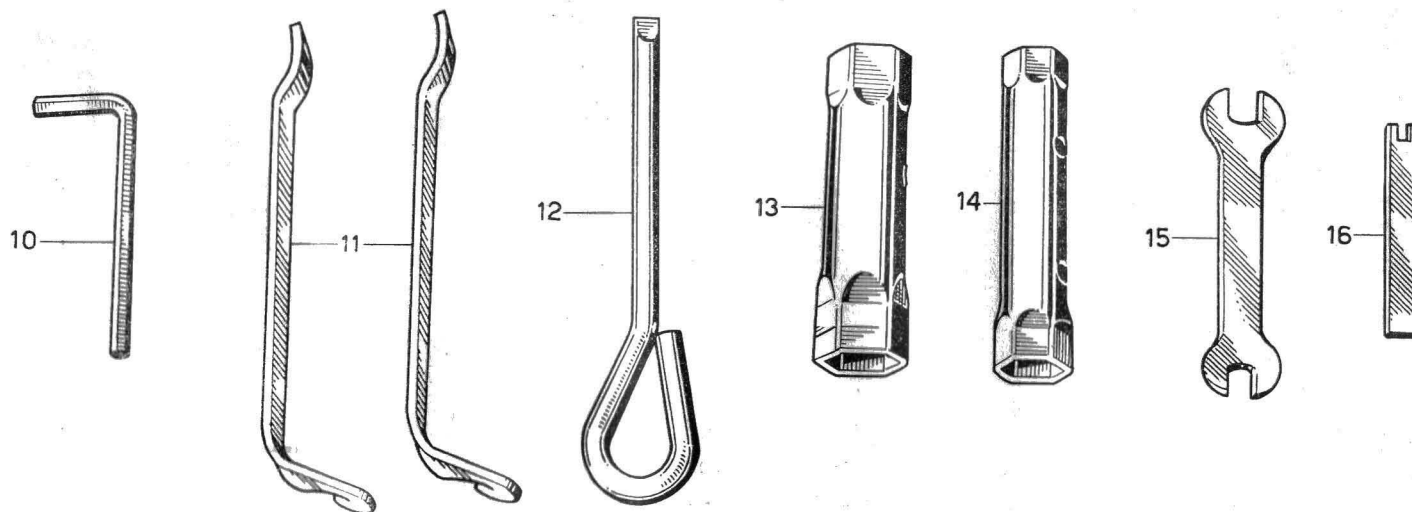


Fig. No.	Order No.	Description	Quantity	Notes
10	32 90 24 00	Allen wrench, cylinder head studs	1	} Tool bag N. 55914585
11	16 90 23 00	Lever, tire	2	
12	36 90 50 00	Screwdriver, combining box wrench pin	1	
13	36 90 19 00	Wrench, box, 19-21-22 mm.	1	
14	32 90 20 00	Wrench, double end, 14-17 mm.	1	
15	11 90 10 00	Wrench, flat, 8-10 mm.	1	
16	55 90 04 00	Wrench, tappet adjusting	1	
17	55 91 12 00	Hex block, bottom oil drain plug	1	
18	55 90 05 50	Wrench, ring, 17-29	1	
19		Instruction booklet	1	



TIPOGRAFIA BERETTA - LECCO
VIA PREVIATI, 58 - TEL. 25.075
PRINTED IN ITALY 1966 - 300