



TECHNICAL ANNOUNCEMENTS NO. 04-2004

July 15th 2003

Object: control unit identification

Model: California MY03 kat

To whom it may concern,

should the engine delivery show some irregularities, please check the label of the engine's control unit.

This announcement concerns all the California MY03 kat models.

Defect found on vehicle: engine's irregular delivery

Possible cause: wrong gauging of the electronic control unit

Technical solution: control unit's replacement

A control unit compliant with the following criteria will include the correct gauging:

	Correct control unit	Correct control unit	Control unit to replace
Serial No.	IAW5RC.C8	IAW5RC.C8	IAW5RC.C8
MM logo	61601.048.01	61601.048.00	61601.048.00
yellow mark	absent	present	absent

The serial number and the Magneti Marelli logo are printed on the control unit's label in the highlighted spots:

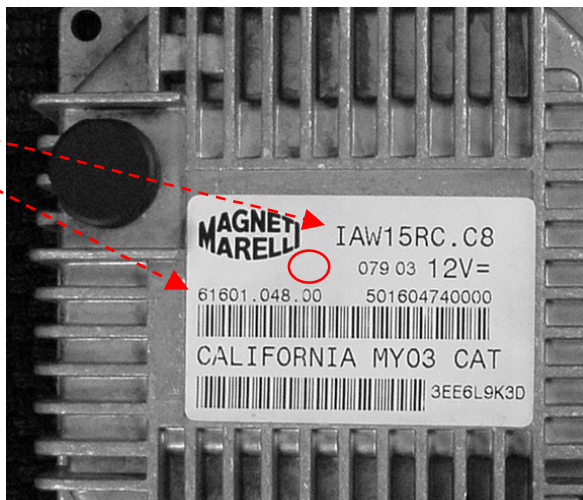
serial: IAW5RC.C8
 Magneti Marelli logo: 61601.048.01

the yellow mark can be on the label or on the control unit's body.

Should the control unit assembled on the vehicle be incorrect, replacing it is indispensable.

Operating request:

Insert the following codes when filling out the warranted request:
 Position code: AM04 (control unit)
 Defect code: MD (defect non provided for)
 Operation code: 01 (disassembly and reassembly)



Sincerely yours